

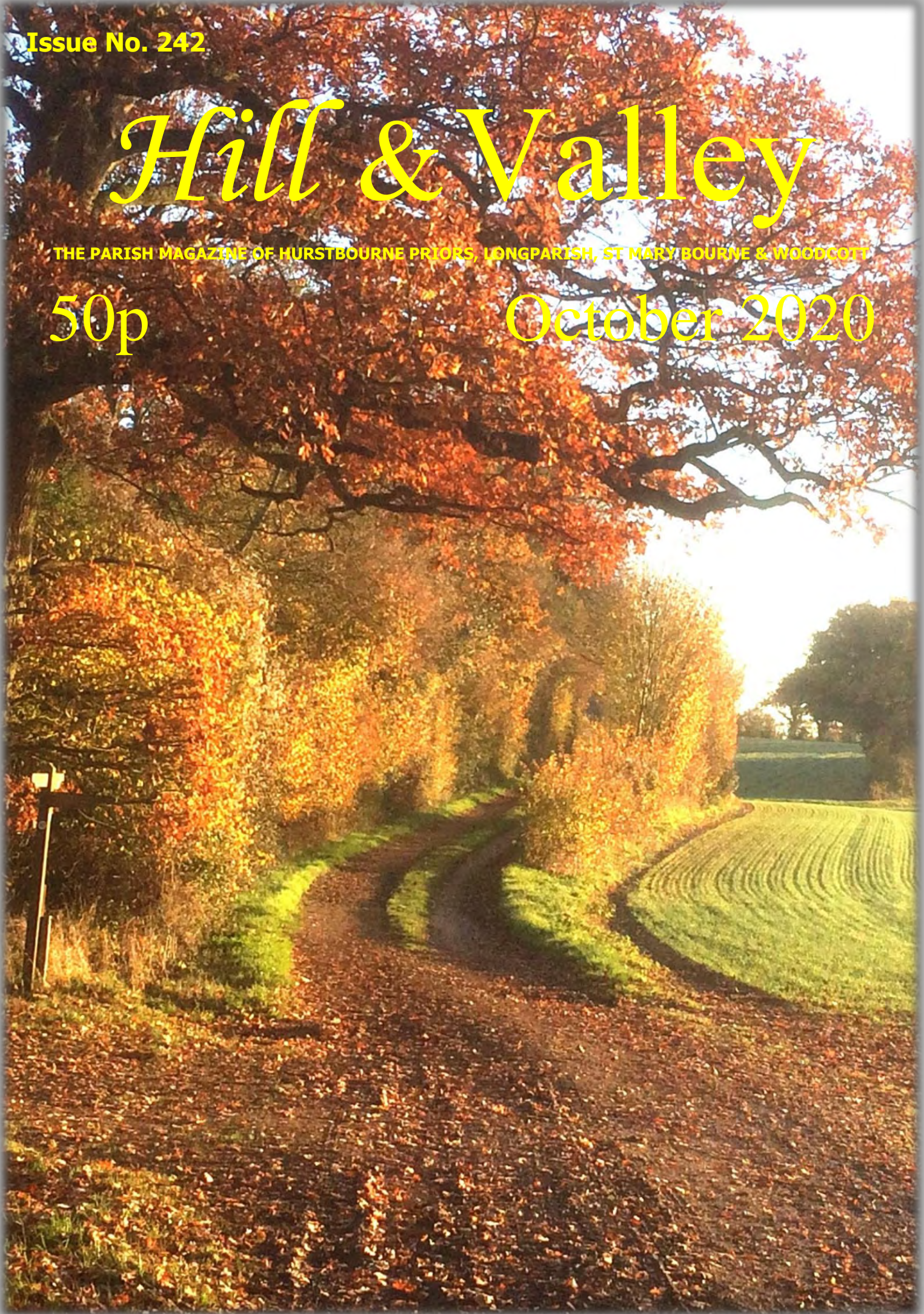
Issue No. 242

Hill & Valley

THE PARISH MAGAZINE OF HURSTBOURNE PRIORS, LONGPARISH, ST MARY BOURNE & WOODCOTT

50p

October 2020



Dear Friends,

October is now upon us! *Winterfylleth* was the Anglo-Saxon or Old English name for the month of October, it marked and celebrated the beginning of winter. As the seasons change, I always find an excitement about what lies, yes in the cooler, windy and rain-filled days, but also the remnants of summer fading, still to be enjoyed. So I encourage you to make the most of being outdoors, enjoying the garden, in walking and in sport and changing the kinds of food we eat according to the new season.

With the harvest in recent memory, we now look forward to living off the fruits of our labour, giving thanks to God as we enter into the autumn season proper, with bronzed trees and a baptism of leaves. But remember, though it is autumn in the Northern hemisphere, it is spring in the Southern hemisphere. Our world in the 'macro' is bigger than our own personal experience in the 'micro'. This is something we should always bear in mind in being open to what is happening in the season around us, especially in our faith. There are different seasons in life, and this autumn I would like to warmly invite you to attend one of our Harvest Festivals nearest to you. You might just be surprised how ordinary people gather to say thank you to God for all the good and provision in our lives, and how we can also responsibly look after His creation for the common good of humanity.

In the next season ahead for our Benefice and Deanery, we await news from Bishop Tim and the Diocesan team about the deployment of Clergy and how we can embrace possible changes ahead. We expect to know for sure by the end of this year. For now I leave you with a prayer for this October:

*This month, Father God,
may my eyes be opened
to see the beauty
in all that is ordinary – yet special –
around me.
May the glory of all that you have made
remind me of your presence
and lead me closer to you. Amen.*

Pax Christi

David

*The Reverend David Roche
Area Dean and Priest in charge,
All Hallows, Whitchurch with Tufton and Litchfield*

October 2020	St Andrew's HBP	St Nicholas' LP	St James' WC	St Peter's SMB
Sunday 4 Trinity 17	Benefice Zoom Service 11am			
Sunday 11 Trinity 18	9:30am Family Service	11am Family Service	9:30am Harvest Festival Communion	11am Harvest Festival Communion
Sunday 18 Trinity 19	9:30am Harvest Festival Communion	11am Harvest Festival Communion	9:30am Matins	11am Family Service
Sunday 25 Bible Sunday	Benefice Zoom Service 11am			



The Benefice Live Stream Service

The Benefice Live Stream Service

We are continuing fortnightly with our Benefice Zoom services. As you can see above, they are on Sunday 4th and 25th October.

And we are delighted to be able to open our four churches again more regularly. Our Harvest services span the middle two weeks of October.

In the meantime along with our Benefice Zoom services there will be a service of Morning Prayer held at St Nicholas', Longparish on Sunday 4th and 25th at 10am.



Communion At Home

We will continue our alternate Thursday Zoom Benefice Home Communion at 6pm. The October dates are 8th and 22nd. It's just under ½ hour and it is a more traditional service. No sermon, the bread and wine in our own homes are not blessed (water if you prefer) but we receive them symbolically.

Dodie



Benefice Contacts during the interregnum period:

For the duration of the interregnum Karen Morrison (Longparish) has kindly agreed to be the Benefice Team Co-ordinator.

Phone calls to the St Mary Bourne vicarage will be diverted to Karen's home phone and she will be fielding all calls that currently go to the vicarage.

For all enquires about Baptisms, Weddings, Funerals in any of the parish churches, please contact Karen in the Benefice Office
 ☎ 01264 738308 or
 e: office.brightwaters@btinternet.com

In an emergency, or if you wish to contact the Rev Canon Dodie Marsden, please
 ☎ 01264 738 211 or
 email: dodie.marsden@gmail.com

If you are unable to contact Dodie in an emergency, please call ☎ 01264 720 215 or ☎ 01264 738 489.

- For details of **Roman Catholic Services** in Whitchurch or Andover ☎ 01264 352829

- **Methodist Minister** for our parishes: The Revd Rachel Borgars, 11 Lapwing Rise, Whitchurch, RG28 7SU ☎ 01256 895878 or email: rachel.borgars@methodist.org.uk

From the Church Registers

Weddings

"Marriage is a gift of God in creation ..."

Sunday 13th September - Hurstbourne Priors
 Marriage of Rosie MacCurrach and Rupert Kelton in St Andrew's

Saturday 19th September - St Mary Bourne
 Marriage of Karen Beach and Alec Walton in St Peter's

Funerals

"Into God's loving care we commit you ..."

Friday 25th September - Longparish
 Funeral of Guy Dawnay in St Nicholas' followed by a burial in the Longparish Cemetery.

Burial of Ashes

St Peter's Churchyard - St Mary Bourne
 Carol Dodson (mother to Lisa Morgan and daughter of Rose Sandal-Ball)

MARCH HOUSE

Web Design
Logo Development
Marketing Materials

Tech Help
IT tutoring for all ages
Patient & Trustworthy

lizzie@marchhouse.co.uk
www.marchhouse.co.uk
0777 622 4985

COUNTY MOLE CATCHER

• Traditional mole control offering a fast & friendly service ~ No mole caught, no fee • No gas or poisons
A member of both the Guild of British Molecatchers & The British Molecatchers Register

YOUR LOCAL MOLE CATCHER

07894 046263
judd@countymolecatcher.co.uk
Please visit
www.countymolecatcher.co.uk



www.oaktrack.co.uk

Grass fed meat · Free range eggs · Seasonal fruit, veg & cut flowers · Handmade preserves
Cottage garden plants

Open every Wednesday to Saturday - 9.30am to 2pm

07933 764305

littlehatherdenplants@hotmail.co.uk
Tina Wells, Charlton Down, Andover, Hants. SP11 0JA

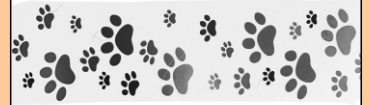
The Shearing Shed

Dog Grooming

Rachel Brown

07460832214

4 Grenage Cottages
Litchfield RG28 7PT



theshearingshed1@gmail.com

BOURNE VALLEY CARS

Airports – Seaports – City Breaks



Taxi & Minibus Hire

01264 736155
07770372736



We cater for up to 8 passengers to all major airports and sea ports, trips to London or a night on the town. Competitive rates, reliable drivers. Whatever your need we have executive cars and minibuses ready to transport you in style and comfort.

www.bournevalleycars.co.uk

QUALITY PRIVATE DENTISTRY

GD Gwynne Dental

Complete Dental Care

Cosmetic Dentistry

info@gwynnedental.co.uk

www.gwynnedental.co.uk

24/7 access to your dentist for advice and emergencies

Children's Dentistry

01256 321 948



HEATSOURCE BOILERS LTD

All makes of oil and gas boiler servicing, repair and replacement.

07952 671669 / 01962 761339

TAYLOR & KERBY

ANTIQUe CLOCK REPAIRS



With a combined 35 years in the craft, Taylor & Kerby are specialists with an enthusiasm for sympathetic repairs and thorough servicing of almost any mechanical clock.

Based in Weyhill near Andover, we cover all surrounding areas of Hampshire, Wiltshire and Berkshire within a 25-mile radius for collection and delivery.

www.taylorandkerby.co.uk
Unit 5, The Fairground Craft Centre, Weyhill,
HANTS, SP11 0QN
01264 772230

Frenches Farm livery

- Beautiful livery on working farm
- Spaces available for DIY, competition, full and part livery
- Access to all facilities including indoor and outdoor arena, lunge pen and jumping field
- Stunning off road farm hacking routes and local bridal ways
- Well - kept summer and winter paddocks for daily turn out

Frenches Farm Livery

Facebook: Frenches Farm Livery

Website: www.frenchesfarmlivery-andover.co.uk

Email: anna.frenchesfarm@gmail.com

Find us in Little London, Andover, SP11 6JG

Please email for more information



Aardvark

PROFESSIONAL OVEN AND CARPET CLEANING SERVICES

AARDVARKOVENCLEANING.COM • AARDVARKCARPET-CLEANING.COM

07783 810806

LONGPARISH PARISH COUNCIL

REPORT FROM MEETING HELD REMOTELY ON 14 SEPTEMBER 2020

The Plough Inn

The Chair of the Working Party reported that an initial offer, jointly made with LCPL, to purchase The Plough Inn had been refused. The PC asked LCPL to commission a new valuation for the purposes of forming a new offer. The new valuation has been received, and the PC and LCPL are in discussion about next steps.

Playground Refurbishment

The renovation of the playground by Green Play Project began on 14 September, and it is hoped that it will be ready to re-open for the October half-term break. It was agreed that the youth shelter would be retained, but the possibility of it being relocated to the football pitch is being explored. A contractor to replace the playground fencing is yet to be decided. The Parish Council thanked the Working Party led by Joanna Roebuck for their tremendous efforts in securing funding and bringing this project to fruition.

Repairs to the stream verge

The Chairman of the Parish Council has been looking into repairing the badly eroded verge that runs alongside the B3048 in Longparish and has been to see similar repairs in St Mary Bourne. It seems likely that the cost of the repairs would have to be paid for by the Parish Council, and the Chairman is researching the availability of grants to fund this. The PC resolved to commission a report documenting the places most in need of repair and how this can be done, if funding is available to cover the cost of such a report.

The Cricketers Inn

The Parish Council acknowledged the efforts of Matt, the new landlord of The Cricketers Inn, and remarked on how well he has been received. The PC thanks him and wish him every success for the future.

Parish Council Meetings

Until further guidance is received from HALC, the Parish Council will continue to meet remotely via Zoom. Members of the public wishing to "attend" any meetings should contact the Clerk or the Chairman.

The next Parish Council Meeting will be held at 7.30pm on Monday 12th October. Parish Council Meetings are public, and parishioners are also welcome to speak on specific agenda items by prior arrangement with the Chairman - Christian Dryden (Tel 720398, or email christian.drydenpc@longparish.org.uk)

Minutes of previous meetings are available on the current or archived Longparish website www.longparish.org.uk

VILLAGE CLEANUP



Save the Date: Saturday 14th November

VILLAGE CLEAN UP DAY

All welcome to a Social Distancing village clean-up day.

10am – 1pm
Meet at Playground

Chores to include litter picking, stream clearing, bus shelter cleaning...

Contact **James Hillier 720016** for more details or turn up on the day.

Tuesday Talks

We were dubious about re-starting Tuesday Talks because of the rules about mask wearing and socially distanced seating.

The new "Rule of Six" makes things worse so we have decided to furlough Tuesday Talks for the current season. We hope to be back next year.

Christine Beresford and Jeremy Barber

CLACY'S GARAGE

London Street, Whitchurch
01256 892099 or 892168
Email wayne.clacy@hotmail.co.uk
Service and Repairs to All Cars
& Light Commercials

Both Diesel and Petrol
Welding and Bodywork



**BREAKDOWN &
ACCIDENT
RECOVERY
CAR HIRE AND LOAN**

Cars & Light Commercials & Motorbikes -
Diesels, Petrol & Catalyts Tested

Matt Townsend Fencing and Landscaping

- *Fencing*
- *Landscaping*
- *Decking*
- *Patios*
- *Hedge Cutting*
- *Turfing*
- *Concrete Bases*

Over 10 Years'
Experience
*Fully Qualified and
Insured*



Call: **07825710750**



Joanne Hosmer
Reiki Practitioner
Burghclere Down, Andover
07955 097434

Reikibyjo@outlook.com
fb: @reikibyjo ig: reiki.byjo

Reiki is a relaxation technique
to promote self healing. It
helps physical, emotional and
mental imbalances. Animal and
distance Reiki also available.



MOSAÏQUE

EASTFIELD HOUSE

BOOK ONLINE NOW, visit:
www.mosaïquebeauty.com
From your computer, mobile or tablet



Relax in beautiful Longparish Mosaïque Beauty & Image

Eastfield House
Forton, Longparish
SP11 6NN

T: 01264 720 797
M: 07785 268 186

E: bp@mosaïquebeauty.com
W: www.mosaïquebeauty.com

Treatments Include:

- Organic & Specialist Facials
- Eye treatments
- Manicure & Pedicure
- Gel Polish
- Lycon Gentle Precision Waxing
- Spa Treatments & Lava Shells
- The Dorn Method
- Jane Iredale Mineral Make-up
- Colour & Style Analysis



Hayward Brick and Flint

Restoration, Alterations, New build

Adrian Hayward
Bricklaying And Flintwork Contractor

Groundworks, Fencing,
Patios, Chimney Rebuild
Landscaping, Drives
Drainage, Damp proofing.

10 Hirst Copse
St Mary Bourne
Andover
sp116st

tel **07833691542**
jinxzoolander@hotmail.co.uk



RIBA #
Chartered Architects

MATHEWSON WATERS ARCHITECTS
WHITCHURCH 07540 726562 www.mw-architects.co.uk



'Not the fete' fete

A big 'THANK YOU' to Cathy Yelf for taking the initiative this year and organising this substitute mini-fete at quite short notice. Thank you too to all the stallholders for their efforts under the restrictive circumstances.

We raised £1,350 from the stalls and received £1,900 from donations. So thank you to everyone for turning out and making the day such a success. The weather was kind to us and it was great to see the village buzzing with people walking up and down between the stalls.

The money is to be split between the church and the playground, so we can send a cheque to the playground committee for £1,625. It is good to see the work starting in the playground, and we're sure all the children are looking forward to its re-opening soon, with some exciting new rides and equipment.



Message from Jan West:
THANK YOU to everyone who
donated to the Toy Stall!!

CREATIVE CORNER !

Colour me in!

Awesome Autumn

H	O	T	C	H	O	C	O	L	A	T	E	E	A
H	W	V	R	E	L	T	S	U	R	E	R	C	L
E	A	N	I	K	P	M	U	P	H	K	O	R	W
D	L	N	E	D	L	O	G	I	N	R	S	L	O
G	K	E	G	N	A	R	O	K	N	M	K	Y	E
E	S	S	E	D	E	R	N	M	U	T	U	A	M
H	O	T	O	F	F	E	E	A	P	P	L	E	S
O	Y	V	M	N	S	K	R	O	W	E	R	I	F
G	M	S	R	R	E	K	N	O	C	C	E	L	H
S	G	N	I	T	A	N	R	E	B	I	H	K	N
M	L	L	D	N	A	L	D	O	O	W	U	I	A
L	E	A	V	E	S	E	R	I	F	N	O	B	U
A	G	I	E	R	T	S	E	V	R	A	H	V	C
W	E	E	I	E	Y	T	S	I	M	S	D	E	E

- AUTUMN
- HARVEST
- RUSTLE
- OWL
- TOFFEE APPLES
- MISTY
- BONFIRES
- WOODLAND
- ACORN
- FIREWORKS
- HEDGEHOGS
- HIBERNATING
- HOT CHOCOLATE
- WALKS
- LEAVES
- CONKER
- GOLDEN
- PUMPKIN
- ORANGE
- RED



Here's something to keep the children amused, particularly at this time of restrictions on social gatherings! If you would like to contribute to something for Creative Corner please send to hillandvalley@longparish.org.uk

Thanks to Clare and Katie Sykes for some very seasonal contributions this month!

Count on Us Bookkeeping Ltd

Bookkeeping and Accountancy Support

07879 475005
www.coubookkeeping.uk
kath@coubookkeeping.uk



- * Confused by debits and credits?
- * Swamped with paperwork?
- * Fed up with VAT returns and other business forms?
- * Concerned about cashflow?

Then call us to talk to a friendly professional who can help give you back your time. And your sanity!

Monthly, fixed-fee packages available
For a friendly and affordable service,
phone now for a FREE first meeting



Practice License: 11809

BARSTU GrassWorks

Garden & Home Maintenance

- Grass & Hedge Cutting
- General Gardening
- Pruning
- Preparing & Planting
- Flower/Shrub Beds
- Sweeping Leaves

For competitive rates
call Barry
Tel. 01264 393 803
Mobile. 07876 178 865



Lucie's

Beauty Room

Affordable beauty treatments

Waxing, Massage, Gel 2 Manicures, Pedicure, Sienna spray tans, Micro needling and Dermaplaning

For appointments please call **07986 220685** or book through my Facebook page
Lucie's beauty room

BURLISON Photography

MPA Photographer of the Year 2017/2018



Fully Qualified & Insured Aerial Photography & Video
Family Portraiture - have fun & relax in the comfort of our Studio, or on location.

Wedding Photography and Videography

Instant Event Photography - Award Ceremonies, Fun Days
Golf Days - Summer Balls
Prom Nights - Xmas Parties - Celebrations

Commercial - Corporate - PR - Interior
Food & Drink - Lifestyle Photography

Image Restoration - bring the memories back to life

Contact Janice on
Mobile: 07771 803025



www.burlisonphotography.com

info@burlisonphotography.com



James Barnett

Quality Painting & Decorating



Advanced City & Guilds
Over 25 Years Experience
Tel: 01264394543
Mobile: 07747603710

Email: Jamesbarnett1@btinternet.com



I SEE A LINE. I CROSS IT.

BESPOKE TAILORING BY DRESS2KILL.COM

£100 off your first **DRESS 2 KILL**
Bespoke Suit



Exclusive offer for readers
of The Hill & Valley Magazine

Dress 2 Kill now at 84 High St Andover SP10 1NE Above All Last

OVERTON

BATHROOM CENTRE LTD

4 HIGH STREET, OVERTON, HANTS. RG25 3HA

TEL: 01256 770374 FAX: 01256 771688

www.overtonbathrooms.co.uk

EXTENSIVE BATHROOM DISPLAYS
FOR ALL YOUR PLUMBING, HEATING
AND BATHROOM REQUIREMENTS

DESIGN & INSTALLATION SERVICES AVAILABLE



LONGPARISH CRICKET CLUB

The shortened outdoor cricket season has drawn to a conclusion and the club are delighted with the amount of cricket that was squeezed in. The club has maintained a positive and progressive approach throughout which sets things up for further success in 2021.

The number and quality of the juniors progressing through the age groups is very encouraging, which provides the necessary pathway into the senior teams. Justin Jackman and the other club coaches/junior organisers take great credit here.

Throughout the winter there will be indoor fixtures as well as fund-raising initiatives to secure the necessary finances to upgrade the net system to the standard the club requires. Support from the village will be greatly appreciated once the details of the fundraising are finalised.

**BOURNE VALLEY
CLASSIC CAR STORAGE**
www.bvccs.co.uk



jackmanjustin@aol.com

<https://longparishcc.hitscricket.com/>



The Longparish Sunflower competition was great fun, and helped raise over £40 for Longparish Little School.

Thank you to all those who took part.

Special thanks to Angela Harwood for the lovely Sylvanian Family prize.

Congratulations to our winner, Phoebe Tonge. The photo is of her prize-winning sunflower, standing at 48 inches tall!!



BIRDS OF LONGPARISH by CHRIS BOWMAN THE SWIFT

The Swift is one of our shortest staying summer visitors. They arrive in late April and are all gone by early August. They are remarkable birds who spend all winter in South Africa and fly back here for a short breeding season.

Swifts cannot land on the ground because their legs are too short to take off and their wings are too long. They only land to nest and sleep on the wing! Swifts have a long wingspan of 42-48cm, black/brown feathers and an almost white chin and throat. The long wings make them very fast fliers but they still have to collect their nesting materials whilst flying.

They nest as soon as they arrive in a small hole in a house or barn or sometimes in a Swift nest box: a shallow cup made of grass, straw and feathers cemented together with saliva. Two eggs are laid, smooth and white, which incubate for 19-27 days. They fledge in 37-56 days depending on the weather as their food source is insects, caught only while flying. During a very wet spell they have to fly further to catch insects. A swallow, on the other hand, only needs 18-23 days to fledge, as they fly closer to the ground to catch insects.

Once fledged, young swifts form a fast flying group, screaming as they fly over the rooftops.



LONGPARISH GARDENING CLUB

Sadly, we have decided to postpone all meetings until the end of the year, due to Covid 19 uncertainties. We hope to restart the programme when the situation improves. All our speakers have been very happy to defer their talks until next year and we hope to visit the gardens that we've had to cancel then.

Best wishes to you all, keep gardening and stay well.

Rosie Lowry 01264 720325

rosie@yewcottagelongparish.com

Marion Bell 01264 720205



FRIDAY LUNCH CLUB

Friday 23rd October

Starting up again following strict Covid Govt guidelines

12.00 - 2.00pm in Longparish Village Hall

A simple lunch of soup and cake on the last Friday of the month £3.

Booking is essential as numbers will be limited.

A mask will be needed for transport and for walking into the hall.

On the day please do not attend if you have any symptoms that could be Covid 19

For booking and/or transport call Andrea Harris
720 457 Christian Dryden 720 398

Contact details will be kept for 21 days and if the situation changes the Lunch Club may be cancelled at short notice.

SOCIALLY DISTANCING LITTER PICK!

Next one Friday 16th October

Thank you to all those who have been helping keep Longparish litter free.

If you regularly litter pick and would like to adopt a road or area, and need equipment please get in touch.

Meet at the Village Hall at 9.15pm

and for coffee at the Cricketers at 11.30am

Tel Christian Dryden 720398

LCA - L2SOTM - The Longparish Second Sunday of the Month handicap race

It was a lovely morning for the September run. We are getting used to the new rules and social distancing and making the best of it. We are not sure whether the "Rule of 6" will allow us to run next month so please look out for the monthly email which you can sign up for here <https://tinyurl.com/ygzolzdb>

Brian Grierson was a lovely man and a great racer. He died in August so we began with some reminiscences from his friend Roger Bradley and a brief silence in his memory.

Our start times are based on previous performance and are to the nearest second but, by an amazing coincidence, three runners had exactly the same start time so we had a specially wide start line to enable social distancing.



Three runners started at exactly the same time

We welcomed new runner, Sylvia Crook, who vastly underestimated her ability and finished first by a country mile. Next time Mr Handicap will make it more difficult for her. Second home was Ian Beveridge, our Most Improved Man and third was Sandra Doney, our Most Improved Woman. There were eight season's bests including personal records for Graeme Johnson and Karl Gailer. Well done all!

Thanks very much to Maggie Barber, Andy Smith and Nick Collier for helping and the Cricket Club for the lovely venue. If Covid restrictions permit, we'll be back in October and we will welcome you if you'd like to run. But you'll have to enter in advance and numbers are limited. The new rules are on the website.

You can see the full results and photos and find more information in the L2SOTM area of the Longparish website <http://archive.longparish.org.uk/l2sotm/>

In this year of commemoration of VE Day and VJ Day and the start of the Battle of Britain 80 years ago, we received this article from Mr Stan Barnes, who now lives in Essex.

Stan and his family lived at Longparish Station until 1957 – he hopes that some members of the community may remember the Barnes Family. We thank him for this interesting piece of village history!



Our Air Raid Shelter at 6 Station Cottages, Longparish, Nr Andover. Hants 1942 to 1945

During most of World War 2 the Barnes Family, comprising Henry Charles Barnes (Father), Margaret Alice Barnes (Mother), Albert Edwin Barnes (Son), Sheila Margaret Barnes (Daughter) and myself Oliver Stanley Barnes (Son) spent almost every night in an Air Raid Shelter at the top of their back garden, near the Pump House. Fredrick George Barnes (Son), known in the village as Barney, was in the Army (R.E.M.E.) serving in Burma during this period, so was not included.

The Shelter was created using my father’s garden shed/workshop, it was lowered into the ground by my father going inside the building and digging the ground out. He used an old-fashioned method used by well diggers, digging out the soil from under the walls, allowing it to sink down a little at a time until the roof was level with the surrounding ground. The roof was then reinforced by heavy beams and galvanised steel before placing the soil removed from inside the building on top of it. Steps lead from ground level outside to a reinforced door.

Inside the shelter, at the far end from the door, were two double sized beds, one above the other. A small coke burner provided heat in the winter. My Father, although a bricklayer by trade, was also a great inventor, turning his hand to most challenges. A great believer in make-do and mend. He loved dabbling in early radio and television. In the mid 1920’s he built a

mechanical-scan television receiver which comprised a rotating metal disc with small holes around the circumference called a Nipkow Disk. Because of his interest in radio, he produced a listening device where a powerful microphone was installed on the roof of the shelter with a cable leading to a receiver inside the shelter. The idea being, should the siren be sounded we would be warned. It was also used to identify aircraft flying over. My father could tell the difference between friend and foe, and also between British Vickers Wellington and Avro Lancaster and German Junkers 88 and Dornier 17.

Our shelter was a refuge for a number of neighbours during an air raid warning. As soon as the air raid siren sounded at night, we could expect at least 10 to 12 people knocking on the door asking if they could come in (packed in like sardines). Providing they could get in through the door, no one was turned away.



At the end of the war, Dad set to work again, jacking the shed out of the hole and returning it back to its former state of his garden shed/workshop, where it remained in constant use until Mum and Dad left the station to go to their new home at the Acre, Longparish in about 1971. **O S Barnes (Stan)**



Longparish Community Support

Longparish Community Support Group is available for anyone needing practical help or support during and after the Covid pandemic. You can be linked with one volunteer for help. Please call 07765 467 006.

If you are interested in a volunteer role please contact Christian Dryden Tel 720 398 or Andy Jolliffe covidhelp@longparish.org.uk

SHOTGUN CARTRIDGES

Rio & Gamebore
Clay Pigeons & Traps

FIREWOOD

Seasoned Logs
Free delivery 10 miles
of RG28 7QA

Danegrove Trading, Lower Woodcott Farm, RG28 7QA
Tel: 01635 250518 E-mail: pamela.nicholson@danegrove.com



The Oak Tree
Nursery School

Rural nursery in Whitchurch for
children 3m to 5 yrs, including:

- Forest school
- French lessons
- Healthy home-cooking
- Graduate-led curriculum

www.theoaktreenursery.com

Tel: 01256 895577

Doug Hopkins ~ Joinery ~

Purpose made joinery and
cabinet making to your
specifications

Tel: 01264 736 705
(Stoke)

Mob: 07857 692 445



Jason Cousins Hair Salon

Come and visit our award
winning Salon for a free
consultation and excellent
customer service.

10c Colerzo Drive
Andover Hampshire
SP10 1JS

www.jasoncousinshairsalon.co.uk 01264 356011

PAUL MITCHELL

TANGLE
TEEZER

ghd

AFFINAGE

Follow Us 



HOME ELECTRIC SOLUTIONS

Professional Domestic Electrician

Reliable Professional Affordable

For all your electrical needs

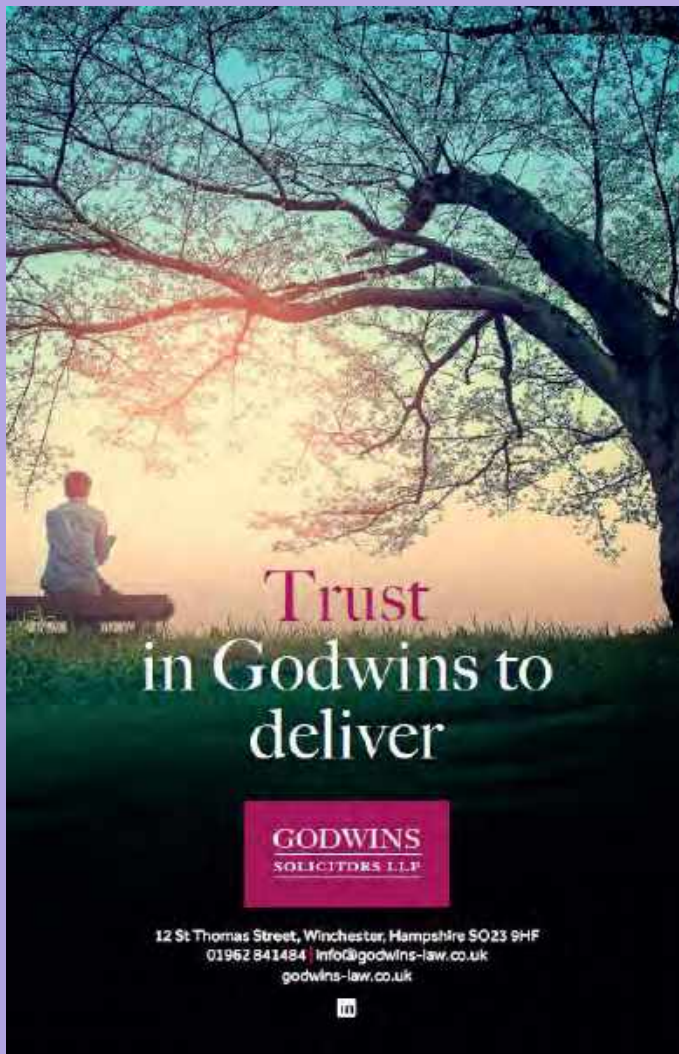
From plug sockets and light fittings to complete rewires
and everything in between

No job is too big or too small so please get in touch.

tel: 07816900083

email: info@homeelectricsolutions.co.uk


www.homeelectricsolutions.co.uk



**Trust
in Godwins to
deliver**

**GODWINS
SOLICITORS LLP**

12 St Thomas Street, Winchester, Hampshire SO23 9HF
01962 841484 | info@godwins-law.co.uk
godwins-law.co.uk



Yew Cottage Bed & Breakfast



Rosie and Martin Lowry

*Cosy 17th Century
Cottage accommodation*

*With Annex
in a beautiful village*

on the River Test

*Longparish, Andover,
Hampshire Sp11 6QE*

Telephone 01264 720325

www.yewcottagelongparish.com



Friends of Longparish School (FoLS) Update

Thank you so much to everyone who has taken part in competitions, bought plants or just donated to our May Fayre fund. We have raised £2,100 of which 10% will go to Little School. These funds make a big difference at this time when we are more limited in the fundraisers we can put on.

Duck Race

We did manage our first live streamed event in the duck race at Upper Mill. Duck number 74 took an early lead which they maintained to win a giant Easter Egg. Well done to Angela Ward who chose the winning duck number. In all the excitement, a couple of the ducks escaped so please let us know if you find one on your travels and claim your reward. A big thanks to Laura Barron who let us use her garden for the event.

FoLS Committee Members Vacancies

We are recruiting new committee members to start following our AGM in October. We are looking for a treasurer, secretary and general committee members. Being on FoLS is an opportunity to make friends, engage your brain and have a bit of fun whilst raising money for the school. You don't need to be a parent at the school to join, just a willingness to get stuck in and give whatever time you have available. If it sounds like something you might be interested in but you're not sure what's involved, please do contact our chair, Beccy Witcher at chairfols@gmail.com.

100+ Club

It's that time of year to renew your numbers. The 100+ club has three prizes each month with a super-draw in December. Numbers are £12 each for the year. Please complete the renewal form or contact Beccy at chairfols@gmail.com. This is a great way to support the school in a social distanced way, so please renew or buy numbers in our draw.

Teddy Raffle

Would you like to give this teddy a home? It was kindly donated to FoLS and we are raffling it at £3 per ticket. Further details available on Facebook or contact Beccy at chairfols@gmail.com.

Thanks everyone for your support.



FoLS 100+ Club draw

September winners :

Eila Chamberlen £20.00 (16)
Simon Troughton £10.00 (15)
Jan and Richard West £5.00 (31)



T C SCOTT
ST MARY BOURNE
GARAGE LTD

MOT Test Station

Repairs & Servicing of all makes of vehicle.

Diagnostics

Welding to MOT standard

Phone (01264) 738606

Bourne Valley PYO

We grow seasonal fruit and vegetables in the heart of the Bourne Valley

For a great day out with the family, come and see us.

Contact – 01264 738 888

www.bournevalleypyo.co.uk

Raymond Brown Skip Hire

Having a clear out or some work done?

£15 OFF

Order your skip online now at www.brownskips.com and enter code 'ONLINESKIP15' at the checkout or call us on 01264 720257.

brownSkips.com

GETHERINGTON CONTRACTING LTD



01256 893150 / 07901 771080
www.gecontracting.co.uk

LANDSCAPING • GROUNDWORK • PLANT HIRE

How to contact your Member of Parliament



Kit Malthouse

kit.malthouse.mp@parliament.uk

01264401401

Or write to me at my Constituency Office
2 Church Close, Andover, SP10 1DP

I hold regular surgeries for all constituents in North West Hampshire



CHARTERED FINANCIAL ADVICE

Do you ever wonder whether you will be comfortable in retirement?

Do you know what the gap is between what you can afford - and what you really want?

Would it be useful to find out now what your situation is?

We offer a **'financial health check'** to help you do just that.

Where a **'financial plan'** is required, we are able to offer a more comprehensive solution.

We listen, answer your questions - and show you how to achieve what you want.

Kingsley Financial – we show you the way.
Impartial, personal, independent financial advice



call 01256 896203 - email enquiries@kingsleyfinancial.co.uk - visit www.kingsleyfinancial.co.uk

Director & Chartered Financial Planner: Eamon Keelan APFS CFP[™] Chartered MCS1 - Chartered Wealth Manager; Peter A Sudlow CFP[™] Dip PFS Chartered MCS1
Kingsley Financial Management Ltd is authorised and regulated by the Financial Conduct Authority

WEATHER – AUGUST 2020

Total rainfall for month	114mm	4.48in
It rained on	13 days	
Rainfall same month last year	76mm	2.99in
Total for 2020	706mm	27.79in
Total for 2019	534mm	21.02in
Max temp (on 12 th)	38.5C	100F
Min temp (on 31 st)	7C	44F

What a variable month!

First we had the longest spell of hot weather (over 34C per day for 6 days) since 1961.

At Papermill Farm, we recorded 38.5C on the 12th August which is the second highest ever recorded in the UK.

Then there was a lot of rain in second half of the month, including one inch in one hour on 26th August.

In all we had 38mm more rain in the month than our 10-year average of 75mm per month.

John Smail

TOFFEE APPLE PUDDING RECIPE

When cooked, this separates into an apple sponge with its own toffee sauce.

Ingredients

85g butter – melted	1 egg
140g self-raising flour	2 large cooking apples
100g caster sugar	
1tbsp baking powder	250ml boiling water
200ml milk	140g dark brown sugar

1. Mix together the flour, caster sugar and baking powder and add the milk and beaten egg, mixing until smooth.
2. Peel, core and slice the apples and line the base of an oven proof dish.
3. Pour the melted butter over the apples.
4. Pour on the batter mixture.
5. Mix the 250ml boiling water with 140g dark brown sugar and pour them over the mixture in the dish.
6. Bake for 40 minutes at 180C.

Serve with custard, cream, ice-cream...

Fenella Williams

WORD OF THE MONTH

There is an autumnal feel to this word with the trees taking on a RUBIGINOUS glow as the leaves take on their rusty hue prior to their annual abscission.

You may remember abscission from last autumn!

Barbara Carrodus

PCC ST ANDREWS ANNUAL MEETING

Due to lock down, we were unable to hold the elections to the Parochial Church Council earlier this year. These will now take place on Wednesday 28th October at 7.30pm using Zoom and the link will be circulated nearer the time. There are two meetings:

The Annual Vestry Meeting – this is a meeting of all parishioners to elect the churchwardens for the coming year.

The Annual Parochial Church Meeting (APCM) will take place immediately after the Vestry Meeting for the election of members of the PCC.

Anyone who is on the Electoral Roll of Hurstbourne Priors can attend and vote at the APCM.

Notice of the revision of the Electoral Roll are displayed in the church and on the Church noticeboard. Revision of the Electoral Roll must be completed by 12 October. Application forms for enrolment on the Electoral Roll are available from mark.williams@btopenworld.com and must be returned to him by Tuesday 12th October for inclusion on the revised Electoral Roll.

Fenella Williams
Churchwarden

HARVEST TAKE-AWAY SUPPER AND QUIZ

We invite you to join us for a Harvest Take-Away Supper and online Quiz on Saturday 24th October.

You will be able to order and collect your meal from the Village Hall between 7 and 7.30pm to eat at home and then we will join together on Zoom at 8pm for Mark Williams' annual quiz.

Tickets are £5 for adults and £2.50 for children (under 5s free) and proceeds will be donated to the support the work of the Mityana Projects Trust, in our link Diocese in Uganda. The menu is available from fenella.williams@btopenworld.com or 01256 8892081. We hope to offer a local delivery service if you are unable to collect your food from the Village Hall. Please place your order by 17th October.

We hope it will be fun!

Fenella Williams



Pest Problems? Call the experts!

TEST VALLEY PEST CONTROL

RATS. MICE. SQUIRRELS. MOLES. RABBITS. BIRDS.

CLUSTER FLIES. FLEAS.

BED BUGS. ANTS. WASPS.

CLOTHES MOTHS, ETC...



Office: 01256 771632

Mobile: 07718986858

All aspects of pest control undertaken

Blackwell & Moody

A full range of memorials on display. Available in granite, marble, stone and slate. Existing memorials restored and cleaned. A personal individual service.

Magdalen Masonry Works,
Alresford Road,
Winchester, Hants
SO21 1HE

Tel: 01962 852 476

Dave Taylor Auto Repairs

Green Lane, Stoke.

All work undertaken including
Bodywork Paintwork
Servicing M.O.T. prep work
Welding and repairs to M.O.T.
standard

All makes, models, light
commercials

Tel: Workshop: 01264 736279

Home: 01264 323571

Mobile: 07792 473174

Fine, Bespoke Kitchens



www.saxondesigns.co.uk : Tel 01264 773333
Studio at Weyhill Farm, Weyhill, SP118DE



Private Hire

Tel Steve

07977 564312

steveataap@aol.com

With AAP - its
always a pleasure

Airport runs

Local/long distances

Contracts welcome

Courier service

Travel tokens accepted

Prompt, reliable and
friendly service

WHITCHURCH

HAVEN MEMORIALS

HAVEN MEMORIALS
are a family run business with over
30 years' experience of creating
bespoke headstones.

We pride ourselves on our
friendly service and impartial advice,
Contact us today to discuss
your requirements.

Haven Memorials, Unit/Shop 2, 6 Wote Street,
Basingstoke, RG21 7NW

Tel: 01256 811829

admin@havenstone.co.uk www.havenstone.co.uk

York Associates

Architectural design services
Planning Consultants
Planning applications for new houses and extensions
Applications for Listed Building Consent
Building Regulations submissions



Andrew Steeden MRICS,
Chartered Building Surveyor
4 Test Road, Whitchurch, Hampshire, RG28 7LP

Telephone: 01256 892748

E-mail: yorkassociates@btconnect.com

www.yorkassociates.org

Satellite & aerial



Satellite & Aerial:

- TV Aerial Installations and Repairs
- Sky Satellite Installations
- Freeview & FreeSat
- FM & DAB Radio Installations
- Extra TV, Satellite & Telephone points
- Commercial (IRS, CCTV)
- European & Motorised

Sound & Vision:

- Home Entertainment Systems
- Home Cinema
- Multi Room Audio Visual Installations
- LED, LCD, Plasma TV's & Projectors
- Home Automation Systems
- Lighting Control
- Commercial

For a friendly and professional service please call 01264 324 224,
email info@onedegreewest.tv or visit onedegreewest.tv



one degree west
satellite & aerial

KMSERVICES

Est. 1997



Painting & Decorating Specialists
Replacement Guttering, Cast Iron & Plastic
Gutter Cleaning & Maintenance

Tel: 01256 892122 Mobile: 0777 562 4488

Find us at www.kmservices.info

All work is tailor made to your specifications and carries a workmanship warranty

WHITCHURCH SILK MILL

**'Hanging by a Thread' Golf Day**

The Mill has been hit hard by the impact of the Covid-19 pandemic and has launched a fund-raising appeal (see the JustGiving page on our website for more details). A golf day at Sandford Springs Golf Club on 14 October has been organised as part of the appeal and is open to golfers of all handicaps. Meeting time at the Club is 9–9.15am for registration and team selection. Breakfast will be provided, participants can expect to have fun, and there will be prizes to win. Cost £50 per person. The number of tickets is limited to 30, so early booking is recommended. See the Mill's website for more details and to make your booking.

Please Come and Buy Your Greeting Cards from Us

We're swapping over to reduced plastic packing for our greeting cards; instead of plastic sleeves they're now being kept tidy with a small sticker. Our five cards for £10 deal is proving popular. If you haven't already done so, please support us by buying greeting cards from our shop, and tell your friends and family about this great deal, too!

Lockdown Open Art Exhibition

The Mill's first Open Art Exhibition runs until Sunday 22 November from 10.30am–5pm, Tuesday–Sunday. Twenty-five artists submitted over seventy works of art and it was a tough job narrowing down the selection. The artwork on display was created by a wide range of artists from the local community, who we asked to share their responses to the Covid-19 pandemic and the lockdown experience. The artists share their thoughts of hope for the future and brighter days to come, also tragic loss, and a wish to relive past happy memories. The exhibition is free with Mill admission.

Family Activities

Please check our website for family friendly trails and activities for the half-term holiday. We will be running outdoor sessions for families to enjoy.

REGULAR EVENTS

Our regular events including Mini Millers, Young Millers and Pins & Needles will resume as soon as we're able.

Volunteer & Friends Coffee Afternoon

For the time being these get-togethers are being held via Zoom on publicised dates.

FORTHCOMING EVENTS

Please keep an eye on our website for news on all our events. We'll give updates when we can.

Contact: info@whitchurchsilkmill.org.uk – 01256 892065 – www.whitchurchsilkmill.org.uk

ANDOVER FOOD BANK

Thank you to everyone who has donated to the Andover food bank over the past few weeks. Your donations are, as always, greatly appreciated.

The Andover food bank is currently in need of the following food and non-food items:-

Tins of rice pudding
Tinned fruit
Tinned potatoes or Instant Mash
Laundry powder/liquid
Dog Food

Andover Foodbank

Tel: 01264 362111 www.andover.foodbank.org.uk



This gorgeous cat is Marley, she is about 3 years, very friendly but can be a bit unpredictable so would not be suitable for families with young children. She would love a garden to relax in once settled into her new home. Annie from last month has already gone off to her new home and is settling in well. Please get in touch if you think

you could offer Marley, or any of our other cats, a home.

We are looking for a volunteer to help us run our eBay page. We use eBay to sell cat dinners which is a vital part of fundraising for our branch. If you have an hour or two you could spare every week to manage the page for us, please get in touch. A small amount of experience with the website would be helpful.

For all homing, fund raising and volunteer enquiries;

Telephone: 0345 260 1501 or

Email: sylvia.cp@outlook.com

To view all cats currently up for adoption visit www.andover.cats.org.uk

KEEPING IN TOUCH

If you would like be included on the village email list to be kept informed of village events, please contact Ann Orr (annjorr@btinternet.com)

Events we would notify you about include Safari Supper, May Fair, Church events or those happening on the Recreation Ground or Village Hall. *Please rest assured your information is kept securely and will not be given to anyone else without your consent.*

HURSTBOURNE PRIORS RECIPE BOOK

In the absence of the traditional Hurstbourne Priors May Fair, this year's Plant Stall and Preserves Stall took place on-line, with tremendous support from the entire village and beyond. Those sales have helped to raise a fantastic sum to support Village amenities, but we'd like to try to do a little bit more to help plug the gap left in our village finances this year. With Covid-19 and the necessary social distancing still very much with us, fund-raising social events are out of the question right now, so our challenge was to find an idea that could safely involve the entire village over the autumn months.



After a little brainstorming, it struck us that Hurstbourne Priors is a community who marches on its stomach. Our village year is made up of social gatherings often centred around food: the Safari Supper, the Harvest Supper, the May Fair with its cakes, produce and teas, concerts with delicious plates of nibbles and the village clean up with sustaining cake.

Our village cooks have shared the secrets of their favourite recipes which Lulu Beasley is assembling to produce a full colour professionally printed hardback cookery book. It will be available to pre-order for delivery in plenty of time for Christmas – the perfect gift for family and friends!

The May Fair Team have agreed that all proceeds will be divided equally between St Andrew's Church, and the Parish Council towards their fundraising to improve the playground equipment.

Price will be in region of £15 and all profits will be donated to the nominated village causes. If you are interested in a copy, please register your interest at hurstbournepriorsmayfair@gmail.com by 16th October 2020. Once the book is ready to print, we will e-mail you a few sample pages of the book, from which you can decide if you'd like to place an order. Note at this stage we're only planning a single print run, so do get your orders in by the deadline to guarantee your very own copy of a little bit of village culinary history!

Lulu Beasley and the May Fair Team

VILLAGE LITTER PICK

Whilst the Parish Council traditionally holds our Litter Pick and Churchyard Tidy in the Spring we have been inspired by the efforts of one of our national newspapers to have another effort around the village and its footpaths and roads. It has been disappointing to see how much rubbish is being dropped – mostly from passing vehicles – in our beautiful village.

In order to comply with the current guidelines regarding social distancing we are not setting a specific date but would ask villagers to take a bag out with them and pick up litter whilst enjoying the countryside during the next couple of weeks. Litter pickers and bin bags are available from Clare Read clareread@aol.com Please make sure you wear appropriate clothing and only pick up where it is safe to do so.

*Many thanks,
Hurstbourne Priors Parish Council*

MORE SUNFLOWER PRIZEWINNERS!



*The biggest sunflower -
was grown by Rose
Urquhart*

*The most flowers on one
branch - Megan and
Alfred Brunwin*



THE GREAT HURSTBOURNE PRIORS SUNFLOWER CHALLENGE



A huge thank you to everyone who took part in the Parish Council’s village sunflower competition, to the children, parents and grandparents who helped, staked and watered all the wonderful sunflower plants. The weather both helped and hindered our challenge with sunshine, driving rain, hail and howling winds and then more hot sunshine!

The final results based on data provided by 20th September 2020, are now in and we are delighted to announce the winners in each category as follows:

Lily and Isobel von Guionneau – Tallest sunflower	Rose and Hugo Briant-Evans – Most successful gardeners in getting all their seeds to grow and flower
Rose Urqhart – Largest flower	Harriet McCullough – Best junior award
Megan and Alfred Brunwin – Most flowers on one plant	James, Jo, Rosie, Matilda and Henrietta Macmillan – Best decorated flowerpots, family prize
Rufus Read – Green fingers award for persistence in getting his sunflowers to grow	Lottie and Fred Tuffnell – Best decorated flowerpots

Special mention goes to the Stanes, Ryan and Adeney families for having a really good try but falling foul of slug and weather sabotage!

We hope that everyone has enjoyed taking part and will be running the competition next year. The inspiration for children to learn about growing things from seed led to a range of other plants and vegetables being grown up and down the village which was an added bonus.

All your beautiful flowers can be cut once the petals fade. Simply cut keeping about 15/20cm of stem, lie them on a sheet of newspaper somewhere dry inside and then hang in the garden for the birds to eat the seeds once the weather gets colder. Then you can watch how many different birds come and enjoy them. Do send in pictures if you can!

The Parish Council will be distributing prizes at the beginning of October so keep an eye on your letterbox. Huge congratulations to everyone who took on the Sunflower Challenge.

Hurstbourne Priors Parish Council



Tallest sunflower with Lily von Guionneau



Best Junior Award - Harriet, obviously being held up by Mummy as the sunflower is several times bigger than she is!



Green Fingers award – Rufus Read



Best decorated flower pots family prize – The MacMillans



Most successful gardeners – Rose and Hugo Briant-Evans



Best decorated flower pots – Lottie and Fred Tuffnell

Serving the local community for over 15 years

Complete Services

Plumbing & Heating Engineers

OFTEC registered & Grant approved

24 hour call-out service

Registered
Oil Heating
Business



Emergency 07990 897372

Enquiries 07402 175318

info@complete-h2o.co.uk

www.complete-h2o.co.uk

HERITAGE PROPERTY & LANDSCAPING SERVICES LTD

Conservation & General Building work
Project Design & Management
Extensions & Refurbishments
Kitchen & Bathroom Installations
Structural works and Bi Fold Doors
Landscaping, Groundwork & Patios
Fences, Gates and Garden Structures

Free estimates for all types of building work

01264 730808

07710 788941

Email: hplsltd@gmail.com

www.heritagepropertyandlandscapeservices.info



RAMPTON ELECTRICAL CONTRACTORS

your local professional electrician covering
all areas of Wiltshire & Hampshire

All domestic & commercial electrical
works undertaken - Bespoke Lighting Specialist

01980 734004

Michael@Ramptonelectrical.co.uk

P C BUTLER BRICKWORK

General and Traditional Building
Roofing, Maintenance & Repairs,
Painting & Decorating

No job too small

01256 781830 or 07833 586250

paulbutler3@hotmail.co.uk



We can help you meet all your pet and equine healthcare needs, with professional and caring staff who can treat your animal at a time that suits you. Our vets offer an emergency service giving you 24 hour reassurance.

...we're here to listen

24 hour phonenumber: 01635 254544

OUR SURGERIES:

Burlyns Surgery, Burlyns,
East Woodhay, Newbury,
Berkshire, RG20 0NU.

Foxhold House Surgery,
Crookham Common, Thatcham,
Berkshire, RG19 8EL.



www.coachhousevets.com



Pilates Unlimited

GILL NETHERCOTT CENTRE, WHITCHURCH
MONDAYS AND THURSDAYS

BROUGHTON PILATES STUDIO
BOOK A TIME TO SUIT YOU

CONTACT CLARE BATES LEVEL III INSTRUCTOR
01794 301 251 or 07971 287 229
www.pilatesunlimited.co.uk

FREEDOM

BI-FOLDS

Bifolding and Sliding Doors – Windows - Residential Doors



Contact us today:

01264 301 302

info@freedombifolds.co.uk

Visit our showroom at Andover Down, SP11 6LJ

The Lunch

Hello from the Lunch Team!
 We are very aware that our regular monthly lunch is being missed and we would love to say when we will be restarting. But the coronavirus is still very much with us and we do not want to take any risks given that a large number of our diners (and the Team) are in the older age groups. Also, social distancing rules would mean limiting numbers and we would need to comply with the many additional requirements applicable to food preparation and serving. In fact, at the time of writing the government has just introduced tighter coronavirus measures. We do want to restart the Lunch in some form when it is safe and viable to do so, but we are now looking at some point in the New Year. Take care everyone, stay safe and healthy.

Chris Smith

SMB

ST MARY BOURNE VILLAGE SHOP
 & post office

At the time of writing it is still uncertain as to what our winter will hold for us all. It's been a strange year and the fact that the uncertainty continues makes it difficult for all. Let's thank our lucky stars for living within such an amazing community and in such beautiful surroundings - I think we've all realised this year, just how lucky we are.

Believe it or not, Christmas stock has started to arrive at the shop, and we turn our heads (albeit prematurely) to December. As last year, you can order your local **Christmas Turkey** from us along with a complete **Veg Box** and we will have an extensive gift range this year so that you don't have to go into town for a bit of Christmas Shopping. Watch this space for news on our Christmas range on Bourne Valley Signpost, SMB Village Shop Facebook Page and on our website:

www.stmarybourne.org

(I might even have started up a regular blog post!)

So, here's to Halloween, shorter days; longer nights; log fires; crisp leaves under feet; the golden hues of autumn and the turning of the seasons. We have everything to keep you going - wood and kindling; fresh soups; great bread and cheese and a good bottle of vino, to name just the bare essentials. Who knows what the last few months of the year will bring us, but one thing is for sure, the shop will be there for you.

Lara and the Team x

Village Shop - September 1☺☺ Club Draw:

£50 - G Culley; **£20** - R Plincke;

£20 - R Sutcliffe; **£10** - J Macnamara.



The Community Library - Club Room
Saturday mornings between 10.30 and 12.30

Hollie's successful SMB Ironman

I would like to say a HUGE thank you to everyone who supported me for my IRONMAN at home on 5th September. Whether you donated, sent me well-wishing or cheered along the course for part of the 14-hour day I am extremely grateful.



I totally smashed my fundraising target. Due to everyone's generosity I raised **£850** for **Blue Cross Pet Charity**. This will be invaluable funds for a cause close to mine and so many animal lovers' hearts. Knowing I had raised so much money certainly helped during the long day, particularly when running the marathon around the village into the darkness.



If you still want to donate please see my link
www.virginmoneygiving.com/HollieCraddock

Thank you all so much again!



ESSEBORNE MANOR
RESTAURANT

Lunch with a glass of wine £18
Sunday lunch buffet £28
Vintage Afternoon Tea £17
Dinner from £30
7course Tasting Menu £55
Monthly Ladies Lunch Club with
speaker £30

HURSTBOURNE TARRANT
SPLISER 01264730444 ESSEBORNE-MANOR.CO.UK

"Snowdrops"

5* Bed and Breakfast
- a haven of
tranquillity in Stoke



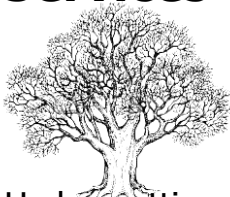
Beautiful gardens,
home-made preserves
and afternoon tea in
the Swedish Log Cabin

Ring 01264 **738920** to book
your accommodation or email:

gardenend@btinternet.com

G&S Lark Tree Services

Andover (01264) 874 464
Amesbury (01980) 670 226
Mobile 07850 849 960



Tree Care ~ Firewood ~ Hedge cutting

graemelark@outlook.com
www.larktreeservices.co.uk

TW GLAZING & WINDOW REPAIRS

01264 782 211/ 077 652 60922

www.twglazingandwindowrepairs.com

misted double-glazed units
cat-flaps into UPVC and glass
glass repairs into all existing frames
hinges, handles, locks and gaskets
greenhouse glass and faceputtying
FREE QUOTES AND ADVICE

MARH
fuels



01635 253253

AS WAITE & SON LLP

PLUMBING & HEATING ENGINEERS

- Heating Systems
- Bathroom design & installation
- Unvented pressurised systems
- Underfloor heating
- Oil boiler specialists;
service, maintenance &
installation

Whitchurch (01256) 893845
Darrell Mobile: 07884 481490
Tony Mobile: 07831 366188

HURSTBOURNE OSTEOPATHY PRACTICE & SPORTS INJURIES CLINIC

FOR APPOINTMENTS CALL
(01264) 736007

Muscular and joint stiffness and pain
Back and neck pain
Frozen shoulder
Acute and long-term sports injury treatment and advice
Acupuncture and ultrasound

GILL RHODES WEALTH MANAGEMENT

WEALTH MANAGEMENT CONSULTANTS



A wealth of expertise
on your doorstep

We provide an experienced wealth management service
and offer specialist advice in a wide range of areas including:

- Investment planning
- Retirement planning
- Inheritance Tax planning

For further details contact Gill Rhodes on:

Tel: 01264 362282

Email: gill.rhodes@sjpgp.co.uk
Website: www.gillrhodeswm.co.uk



Light Touch

Helping our Villages' Hedgehogs through the Winter.

On the 30th July 2020, hedgehogs officially joined the red list of animals vulnerable to extinction. If you want to help them, start by making 13x13cm access holes (if your garden is fenced or wired) so they can travel through and even help rid your garden of pests. Encourage your neighbours to do the same so hedgehog highways are created. They need large areas of land to find enough food. You can supplement their diet if you like, with dry cat food for preference as it has more protein than dog food but avoid fish. Never give milk as it makes them very ill, and always provide a dish of fresh water.

October is the month to clear out sheds, compost heaps or anywhere overgrown as babies have left their mothers and adults have not started to hibernate. But please don't clear up too much as they will need somewhere quiet, dry and frost free to spend the winter such as piles of leaves and twigs in suitable corners. If you can't bear to do this, what about a wooden box full of leaves with a 13x13 cm hole and a waterproof lid. They usually hibernate the end of October onwards when the temperature reaches about 5 degrees, but research has shown they often move to another hibernation site during the winter on a mild day. So, if you see them active on a warm day, don't worry unless they look very wobbly. They wake up around March very hungry.

Hedgehogs are nosy little beasts and if they can get into trouble they will. So, while having an autumn clear up please check bonfire sites very thoroughly and preferably move everything before you light it or even better lay it at the last minute. Also pre-check compost heaps before digging out and anywhere you are considering strimming; put away fruit netting till needed again next year; cover holes in the ground or put in a ramp as they are not that agile; also put stones or a ramp at the edge of ponds, and please check sheds if they have been left open for a few days as they could starve if shut up in there.

From the end of October onwards, depending on the weather, if you see small hedgehogs about, they need to be weighed. They must be over 500 grams (1lb.1oz.) to be able to hibernate safely. If they are under 300 grams and definitely out alone (especially during the day) they are probably orphaned.

If you hold them on their backs in the palm of your hand, they should look round when curled up. An oval shape means they are struggling for some reason and need professional help. More details on the RSPCA website under "hedgehogs". Scroll down for good pdfs to download.



So, if concerned ring one of the following organisations (never 'just drop in'):

- **The Wiltshire Wildlife Hospital** in Newton Tony will take small hogs for overwintering and treat all sick or injured animals. They will collect from the village if needed and have helped several times in the past. 01980 629 470 or 07850 778 752.
- **Hart Wildlife Hospital** in Medstead will take in a few who are too small and will also treat sick ones - 01420 562 335 - Opening hours 8am to 5pm with an out of hours number recorded message.
- **Hedgehog Bottom** in Thatcham is open 10am to 9pm and will overwinter as many hogs as they can fit in to a small cottage (a surprising number) and give medical care - 01635 826 120.

If a hog is screaming or obviously injured take it straight to a vet who must treat it under their code of conduct.

Go Star Gazing in October

1 October - Full Moon - Harvest Moon

1 October - Mercury at its highest point above the horizon. Look for Mercury low in the western sky just after sunset.

7 October - DRACONIDS Meteor Shower - minor. Only 10 meteors per hour.

13 October - MARS (The Red Planet) is closest to the earth & brighter than at any other time of the year - visible all night long.

16 October - New Moon. Best time to view Galaxies and Star clusters.

HIGHLIGHT OF THE MONTH

21-22 October - ORIONIDS METEOR SHOWER. Peaks at midnight on 21 & morning 22. **Up to 20 METEORS PER HOUR.** Waxing crescent moon will set before midnight leaving dark night sky for good show. Best view from a dark location after midnight.

29 October - Southern Taurus Meteor Shower - minor. Only 10 to 15 per hour. However, this shower famous for high percentage of bright fireballs.

31 October - Full Moon - Blue Moon. Rare calendar event only occurring every few months. Hence, "Once in a Blue Moon".

Lots to look up for & enjoy in October. Remember to wrap up warm, make a flask & use a recliner to enjoy the shows.

Please try to minimise light pollution by reducing outdoor lighting. This benefits the environment, wildlife & humans alike.



Memorial Bench in Stoke Play Area

A new bench has been installed in the Play Area at Stoke. The bench, which was made by local blacksmiths Robert and Izzy Mew, is dedicated to the memory of Robin Mackenzie in recognition of his service to the community as a long-standing Chairman of St Mary Bourne Parish Council.



Country Oak Buildings

Specialising in:
Hand Made Oak Buildings
Garden Structures and Follies
Traditional Carpentry Techniques

Contact Nick 01962 776 217
Mobile 07919 987451
www.countryoakbuildings.co.uk



CHIROS HEALTH CLINIC

01264 324924

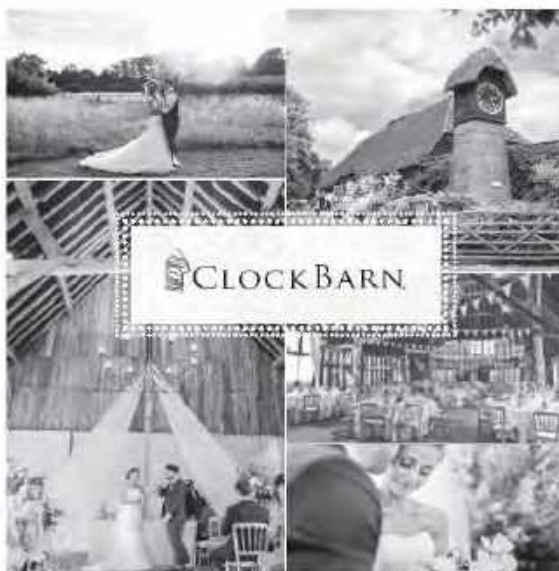
www.chirosclinic.com

Our Treatments:

McTimoney Chiropractic
Sports Therapy
Allergy Testing
Medical Tattoos
Hypnotherapy
Homeopathy
Counselling
Nutrition



36 East Street,
Andover, SP10 1ES



CLOCK BARN

Beautiful barn weddings

Clock Barn, Tufton Warren, Whitchurch, Hampshire, RG28 7RB

01256 630199 clockbarn-weddings.co.uk



Images by Mia Hooper Photography, Jacob & Pauline Photography and Kit Myers Photography

Tried - Tested - Trusted

We only offer the best advice and a no-pressure sales calls

KJM



Building quality since 1983...Triple Glazing Specialists



Windows, Doors, Conservatories in Hardwood, PVC and Aluminium

Mylen Business Centre, Mylen Road, Andover SP10 3HR

Tel 01264 359355 | Fax 01264 353441 | e-mail: sales@kjmgroupp.co.uk



www.kjmgroupp.co.uk - 4 x Finalists "Installer of the Year" G-Awards

Summary Report - Parish Council Meeting Tuesday 15th September 2020

Four councillors and the clerk attended the virtual Zoom meeting held on 15th September.

County Councillor's and Borough Councillor's reports

- there were no reports.

Matters discussed at the meeting included:

SSE Tree work in lake area - The Chair reported that SSE needed to carry out tree work within the lake surround, next to the footpath power lines. Power would need to be turned off to multiple houses and respective notice given before the work could be carried out. Currently there is no date from SSE when this would happen.

Flood and Emergency Group - The Chair had contacted Sovereign Housing to remind them that the stream culvert adjacent to Bailey Stratton Bungalows in Stoke was due for its annual clearance.

Highways - Bank Top Development - Hampshire Highways had confirmed that tree debris etc on land bordering the Bank Top development was a matter for B&DBC planning enforcement. This had been reported to Enforcement and a reply was awaited.

Recreation Ground and Lake -

a) Fencing for Playground and Hard Standing

The council accepted the most economically advantageous quote for this work and decided that the Play Area should be completed first. Applications for LIF funding had been made to B&DBC and to Hants CC for funding under the County Councillor Grant scheme.

b) Lake

A volunteering exercise would take place on Saturday 26th September to clear debris from lake surrounds. A risk assessment would be carried out beforehand.

c) Recreation Ground

Stinging nettles around the exercise equipment and cricket pavilion would be trimmed in the next month.

d) Planters on the hard standing

Cllrs Perry and Randall would arrange for the planters near the MUGA and outside The George pub to be replanted with seasonal plants.

e) Parking on the hard standing

Cllr Madge would look into ways to make parking easier and more visible on the hard standing.

The next meeting of the Parish Council is scheduled for 20th October 2020

Parish Council Meetings

The parish council will currently meet only when required to discuss urgent business and these meetings will be held remotely. As usual, notice of any meeting will be published four days in advance on the parish council website, the noticeboards and on Bourne Valley Signpost. You will be able to access the meeting remotely. But to allow for smooth running, if you are planning to raise a matter with the parish council you are asked to submit it in writing in advance to clerk@stmarybourne-pc.gov.uk. If the matter is not urgent then please wait to bring your issue to a meeting later in the year.

All planning applications for the parish of St Mary Bourne can be looked up by visiting the parish council website www.stmarybourne-pc.gov.uk - go to 'Planning' and 'Planning Tracker' and use the options available - or by contacting the Parish Council Clerk ☎ 01264 738 039. Details of all planning applications can be accessed on the B&DBC website - go to www.basingstoke.gov.uk/planning

Let's have your views on the Loos Possible Closure of the Public Toilets outside the Village Centre in St Mary Bourne

Basingstoke & Deane Borough Council has informed St Mary Bourne Parish Council (letter 15th September) that following a Financial Strategy review, B&DBC funding for the public conveniences at Bourne Meadow will be discontinued and therefore **the toilets are likely to be closed on 1st April 2021.**

The reasons given by B&DBC for this decision are "low level of usage and the ongoing financial costs associated with their maintenance". They want to know whether the parish council will take over the costs of maintenance and funding of the facility (approx. £5,000 a year).

The parish council would like to have the views of parishioners and other users. A reply is required by B&DBC before 30th October, otherwise the toilets will be closed on the above date.

Please let us have **your VIEWS on the Public LOOS**. As a parent/child minder, bicyclist, shop customer, walker, visitor to the village, sports player, Recreation Ground user - in whatever capacity - we'd like your feedback. Please also let other possible users know about this proposal.

Contact The Parish Council Clerk - 01264 738 039 or clerk@stmarybourne-pc.gov.uk www.stmarybourne-pc.gov.uk



'Ride and Stride'

in aid of Hampshire and The Islands
Historic Churches Trust

The wonderful total of **£520** was raised by Eve Lind-Smith and Nigel Dickinson on 12th September. Half the amount will benefit St Peter's Church. Thanks to them and their sponsors.

P.J.ROPER

Traditional Builders

Traditional Building & Period Property Specialists

CONTACT:

Office - 01256 892993

Mobile: 07770 368176

kathleenroper@btinternet.com

Richard Steel & Partners

The Family Owned
FUNERAL DIRECTORS

Serving Hampshire
since 1860

Alderman House, 12 - 14 City Road,
WINCHESTER
(01962) 862333

Andover Carpet Cleaning Co.



Carpets, Rugs, Suites,
Sofas, Recliners etc.

Scotchguard &
Deodorise Treatment

Call 01264 334636
Mobile
07850 677 761

BELVEDERE TRAVEL



Catered gulet holidays in Turkey

www.belvederetravel.com

email info@janeblount.co.uk

01264 738533 and 07884003082

BOURNE Again Feet

Hilary Steeden MGFHP MAFHP

Foot Health Practitioner

Tel: 01264 738 554

Mob. 07787 703 900

. Problem Nails .Verrucas
.Corns .Cracked Heels
.Hard Skin .Fungal Infections



BINLEY HOUSE FARM B&B

Bed & Breakfast
in the quiet hamlet of Binley
in the Hampshire countryside
near the charming village of
St Mary Bourne. En-suite
bedrooms, full English or
continental breakfast and a
warm welcome.

Horse B&B for two horses also available. Binley House Farm is home
to champion Arabian horses. Email: binleyhousefarm@gmail.com
or ☎ 01264 738343 www.binlevstud.com



WEST JOINERY

Bespoke doors,
windows,
kitchens,
wardrobes,
bookcases.

*For all your
joinery needs*

07717 570748

Julian@uswests.co.uk



JULIAN WEST CARPENTRY
A COMPANY BUILT ON REPUTATION

Loft Conversions . House
refurbishments
Kitchens . Bookcases . Wardrobes
General Carpentry and
construction

We pride ourselves on offering
quality service and workmanship
which enables you to see the full
potential of your property

For further details please contact
us on 01264 860392
or 07717 570748

Email: julian@uswests.co.uk

BREACH FARM WOODLAND BURIAL GROUND ST MARY BOURNE, SP11 6DQ

A beautiful woodland burial ground
overlooking the Bourne Valley

Single, Double and Ashes plots available.
Area for pets.

For further information/request a brochure:-
Mobile: 07789 888399

Email: lisa@breachfarmwoodlandburialground.co.uk
www.breachfarmwoodlandburialground.co.uk

Chris Tyler - Electrician

Based in Whitchurch to serve the Bourne Valley

"Assuring you of a friendly and reliable service."

New extensions, rewires, faults & repairs, new replacements &
additions of electrical items to "Part P domestic installer" standards.

Tyler Contracting Services Ltd

Phone - 01256 892093 / Mobile - 07552 505915

Email - enquiry@tylercs.co.uk



**Electrical Safety
Register**
incorporating
ELEC SA + ECA
Cambridge's Ltd

Postcard from Binley - October

I've spent the morning trying to notch up some brownie points by sorting out the kitchen cupboards. It's amazing what you can find in there! My trip down memory lane produced a Harrods Christmas 'pudding' from the 80s, a tin of cocoa that I'm sure was my mother's during rationing, a tin of mustard powder that my father carried through the Second World War and nine little bottles of tabasco, a legacy from a period when I developed a fondness for Bloody Marys; an avenue of pleasure that was closed to me when I was rumbled having one for breakfast. Ah well, I suppose she had a point! But now I am in shirt sleeves under a cloudless sky pruning an old vine that coils around a rickety, metalwork gazebo. Both are getting on a bit in years but are just about holding it together. I know *that* feeling! Gone is the intensity of high summer. The autumn sun hangs in the sky like the yolk of a good egg. The light is paler and has a watery quality. You do not need to read Keats to appreciate this season. Look around with your own eyes... this valley is full of poetry.

A lemon squash is quenching my thirst and I'm taking a well-earned rest sat in front of the house which is warming its old bones as well. The oak beams that are set into the mellow brickwork are creaking as they expand in the heat, I can hear them... "tick...tick". The straw in the thatch is almost bristling! Insects are buzzing around my ears. A bumble bee somewhere is bumbling, and it feels good to be alive!

As I'm getting older and more in touch with my own mortality I'm learning to appreciate these simple things as if it were the last time I'd experience them. I remember the playwright Dennis Potter being interviewed as he was knowingly living his last few months. A plum tree that sat beneath his office window was in full blossom and he described it as "the whitest, frothiest, blossomiest blossom that I could ever see!" I can dig where he's coming from.

As I was pottering around at the weekend a head popped up over my hedge and introduced himself as having lived in my house just after the war and through the 1950s. I invited him in and spent a very interesting couple of hours chatting with him. It was a conversation that made me yearn for simpler times, and in essence wasn't dissimilar to my own experiences growing up in London. Family ties then were stronger. Three generations of the same family living either with each other or side by side was the norm, elderly relatives cared for in the family home and not shipped off to some anonymous institution. He has kindly sent me some old photographs of the house and garden and how very different it looks too. I shall treasure them.

But even an old townie like myself can appreciate nature's harvest and give thanks. My fig tree has outperformed itself this year and I have an abundance of these sticky delicacies. The last time I had a crop like this I made fig brandy. It sat in a stone crock for a year before I decanted it into bottles where its consistency

was syrupy and medicinal. I donated a bottle to the beaters' wagon on the Culley shoot in St Mary Bourne but hadn't appreciated the powerful laxative effect it would have on those poor wretches. It ruined the last two drives! I can laugh now.

But summer and autumnal fruits and alcohol make great bedfellows and the finest orchestrator of these heady brews is Phillip Fish of Egbury who first introduced me to homemade raspberry vodka. Sloes and damsons are hanging heavy from branches right now, but I'm advised they need a frost on them first to bring out the sweetness. The problem there is by the time the first frost comes they are all picked so I'm told a couple of hours in the freezer before bottling does what nature intended.

But right now, I have issues to attend to in the garden. I spent a couple of hours tidying a flower bed that had "gone over". The nasturtiums that valiantly saw off both Cabbage White caterpillars and black fly have been cleared away. I had company in the form of a solitary robin, the gardener's friend, who I struck up a conversation with as I pointed out various worms and bugs for his delectation. He showed no fear as he danced around my feet, pecking away before retiring to the handle of my fork.

I have no problem talking with creatures other than humans. In fact I think I prefer it. Dogs in particular love a chat. I owned an Irish Setter once who actually answered back! On a regular basis he said, "I'm in charge!", which he probably was but on reflection I think it was just a nervous yawn!

I draw the line at conversing with pigeons, however. There is a gang of them who live permanently in my garden. They never seem to go anywhere or do anything; they are complete slobbers. You'll never see them flying over a field of peas and taking a pellet for the team. No chance! They are all fat from robbing the bird table and if they are not fornicating, they are lounging around in the bird bath like it were a communal jacuzzi or defecating on the roof of my car. I'm sure if I let them into the house, they'd be perched on the back of the sofa watching daytime tv and eating pizza. And to prove there is no rest for the wicked, my wife has pointed out for the umpteenth time that I am yet to sweep any leaves up and to "get off that ***** laptop!" Cheerio!

NA



GroundLord

Tree Surgery • Tree Surveys
Fencing • Stump Grinding
Forestry

Fully Qualified, with £5m Public
Liability Insurance

A team of professional experts you can trust



07880 557005

josh.pritchard@groundlord.com

Find us on
Checkatrade.com

ALAN ROGERS

PROPERTY MAINTENANCE

01264 772615 07825 005923

- Garage Conversions
- Chimney Lining
- Plastering & Coving
- UPVC Facia soffits & Guttering
- Double Glazing
- Kitchen & Bathroom Fitting
- All Painting & Decorating
- Fencing & Paving
- Carpentry

30 + Years' Experience
Friendly local service

SOFT TISSUE THERAPY & SPORTS MASSAGE

- ✓ We treat muscle pain & tightness
- ✓ Alleviate joint pain & stiffness
- ✓ Regain strength & increase mobility

CROSS
MASSAGE
THERAPY 

Great for shoulders, hips, knees, backs, and more.
Clinics in Hurstbourne Tarrant and Andover.

Call or text: 07402 274 449

info@crossmassagetherapy.co.uk

www.crossmassagetherapy.co.uk



CLEAN OVENS

DOMESTICS LTD

- AGAS • HOBS • OVENS • RANGES
- EXTRACTORS • BBQS • MICROWAVES

Eco-friendly materials used - Experienced staff
Covering Hampshire & Wiltshire

Call or email Dave or April

tel: 0800 707 6629 mob: 07563 693145

email: david.huggins@btconnect.com

M.J. SLY

QUALITY MEMORIALS AT
WORKSHOP PRICES
FREE BROCHURE

MONUMENTAL SCULPTOR

Andover Memorial Studio

6 Swan Court,
Andover, Hampshire.

SP10 1EZ

Open by appointment only

Choose a NAMM Member
www.mjsly.co.uk

email: martin@mjsly.co.uk

Telephone 01672 516797
Pelham Court, Malborough



Mobile knife, scissor & tool sharpening services

No call out charge

Call Becky on **07393 600630** to book a visit

More details can be found on

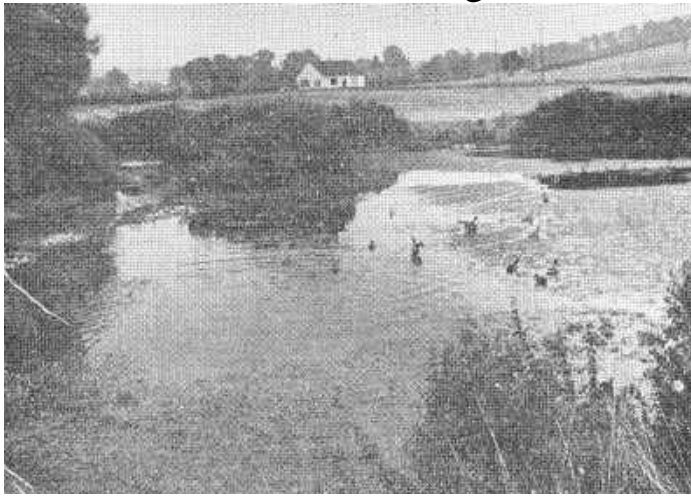
www.onpoint-sharpening.co.uk

To Advertise in this Magazine contact: Mr Michael Widén 01264 738250

St Mary Bourne Lake

Compiled from the archives

PRESS CUTTING - August 1970



Dr. J. W. Evans' plans for an ornamental lake at Derrydown Farm, St. Mary Bourne, is to be the subject of a local inquiry at Kingsclere on 23 September. The inquiry has been ordered by the Minister of Housing and Local Government following Dr. Evans' appeal against Hampshire County Council's refusal to permit the enlargement of an existing pond, seen above, to form an ornamental lake to retain fish and other wild life and to act as a reservoir when needed. The path of the River Bourne which will be adjacent to the lake can be seen on the left of the picture. The county council refused permission on the grounds that the extraction of gravel to form the proposed lake would be "seriously harmful to this rural area, to the attractive qualities of St Mary Bourne village and to the residential amenities of nearby dwellings." Secondly, it was considered that at the present time gravel working in the Bourne Valley should be resisted, "and the grant of permission in this case would make it difficult to resist further applications for gravel extraction in an area of great landscape value."

And still the trout are dying...

A STRANGE story comes from the Hampshire Test, that famous trout stream.

Some of its tributaries, called "bournes," fed from the chalk hills, are streams which begin to flow only when the water-bearing strata under the chalk are full and overflowing. They usually begin to run in December or January, and their flow begins to ease off and may finally cease in autumn.

One bourne flows, intermittently, through St. Mary Bourne, near Andover. It skirts Derry Down Farm, home of Dr. John Evans. The bourne is a natural spawning ground for trout, and yields, in the "summer flow," a profusion of weed and insect life. So trout, weighing anything from 2½ to 4 lbs., move up to spawn and stay on. But when the waters disappear, they are stranded, and die.

For the past six years, Dr. Evans has mounted a rescue operation; electrically netting those he could at low water, and taking them back to the main river several miles away.

He has also deepened a lagoon which held water through the winter, at the head of an unprofitable meadow on his land.

Last October, 300 fish crowded into it, of which 240 survived. Solution obvious: transform the derelict meadow into a holding lake, properly landscaped, of course.

Dr. Evans, back in 1967, sounded the Hants River Authority, who approved. A preliminary telephone call to the Area Planning Officer produced an encouraging response. Dr. Evans then put in his application as a landscape project. Back from the Area Planning Officer came a refusal, headed "Extraction of Gravel at Derry Down Farm". Oh, yes, building the lake *would* mean going into a gravel seam, but the doctor was innocent enough to think that was a good idea anyway, because he could sell the gravel to cover the cost of the lake.

He protested that he had *not* applied to extract gravel. The reply, still headed "Extraction of Gravel - Derry Down Farm", confirmed the refusal.

Dr. Evans was naturally upset. He said he wanted no more letters with misleading subject-matter headings. He felt that the word "gravel" had paralysed common sense, and that his true intention should be properly understood at least, before being refused.

Back came a reply with *no* subject-matter heading, saying that both aspects *had* been taken into account.

Dr. Evans has pondered the matter for a further two years, and last autumn again submitted the scheme in a slightly modified form. He really does *not* want to sell gravel. He only wants to save the fish, and improve the landscape.

Meanwhile, the annual slaughter goes on. Sixty white corpses counted round the hole, 40 round another. And in January of this year the application was again refused, in terms which made it clear to Dr. Evans that this application had *again* been considered as one for gravel extraction. He is now appealing to the Minister of Housing and Local Government.

PRESS CUTTING - June 1971

ST. MARY BOURNE DOCTOR CAN HAVE A LAKE TO HELP SAVE LIVES OF FISH

A conservation scheme to save the lives of fish in the Bourne rivulet - they die in their hundreds in dry seasons - has finally been given official approval.

When he first applied for planning permission for carving out a lake at St. Mary Bourne to act as a refuge when the river dries up Dr. J. W. Evans was given a firm official "no."

But on appeal to Whitehall, Dr. Evans won approval for the scheme in principle. And now he has finally convinced the Northern Divisional Planning Committee that the lake scheme "holds water."

The original opposition to the scheme was based on the fact that gravel would be extracted to create the lake.

G & R Cousins

BUILDING SERVICES

EXTENSIONS • RENOVATIONS



TILING • CARPENTRY • BRICKWORK

PAVING • PLASTERING • WINDOWS

GARAGE CONVERSIONS • NEW BUILDS KITCHENS • BATHROOMS • PLUMBING • ELECTRICAL

- Established over 10 years -
• FULLY INSURED •

For a FREE estimate call
01264 860115
or Mobile: 07831 342599



LOCAL BUILDER SEMI-RETIRED

Small jobs around your Home

I have been in the building business (formerly Amport Construction Ltd) for over 40 years. Do you have jobs around your house that need doing?

Room Alterations • Garage Conversions • Plastering • Tiling
Brickwork • Rendering • Carpentry • Garden Walls and much more

No job too small. References available
Please contact me for a free quotation:

Ian Gaitskell

Tel: 01264 771280 Mobile: 07787 530991

Email: amportconstruction@gmail.com Web: www.amportconstruction.co.uk

Amport based



GOLD & GREY

Elegant English Interiors

Interior Design

Curtains & Blinds

Upholstery

Fine Fabrics & Wallpaper

Tel: 07795 247 142

Info@Gold&Grey.UK

Hurstbourne Tarrent

Sp11 0AS

WWW.GoldAndGrey.UK



Ryan Dickinson
Contract Services Ltd



Leave your central heating in our hands. No more expensive repair bills with parts and labour included in our cover. We provide yearly contracts for gas and oil boilers. Visit our website for more details.

Monthly Boiler Service Contracts

- ✓ Have a happy boiler with all round protection
- ✓ One off annual fee or easy monthly payments
- ✓ An engineer on site within 24 hours
- ✓ Parts and labour included
- ✓ No expensive repair bills
- ✓ Annual boiler service
- ✓ Total peace of mind

Showroom Open
Mon - Fri: 9am - 5pm

For more details
contact us by
telephoning
01256 895216 or
visiting our
showroom at
**No7 London Street
Whitchurch,
Hampshire
RG28 7LH**



Check out our website
www.ryandickinsonplumbing.co.uk



Bourne Rose Beauty Sky Cousins

We offer a professional, fully qualified and dedicated client service in a full range of beauty treatments.

- Nails Waxing • Lashes & Brows • Facials
- Fake Bake Spray Tanning • Fake Bake Body Polish

Call us to see what we can offer you
07786931639



Follow Us



Fake Bake

Officials reported - and the divisional planning committee agreed - that such work would be “seriously” harmful to the surrounding rural area, to the attractiveness of St. Mary Bourne village, and the amenities of nearby homes.

The committee also ruled that gravel digging on the scale envisaged - up to 40,000 cu. ft. - would create a precedent for other similar applications in the area.

But on appeal the Secretary of State accepted that Dr. Evans’ prime consideration was to provide a reservation for fish and other wild life with no incentive of financial gain from the sale of gravel.

The secretary accepted the inspector’s report recommending that a smaller lake, involving the digging of no more than 25,000 cu. yds. to form a lake of up to three acres should be devised.

While a parish meeting in the village voted in favour of the proposal, when it came to be re-submitted to the Northern Division Planning Committee, members raised serious doubts over whether the lake would not also dry up when the river did.

And several objections, mainly based of the presumption that the lake would not hold water were received from members of the public.

Considered by the divisional committee in May the new application was deferred for officials to obtain more information about the details of the scheme.

At their June meeting in Basingstoke, deputy divisional planning officer, Mr. A. S. Cull, reported: “In the first place I was as opposed to this scheme as anyone.

“But I think we can now fairly safely agree, quite literally, that the lake will hold water.

“Dr. Evans says that it will be fed by underground springs in the area of the lake, and from the shingle on the banks and his information about the average fall of water in the area to substantiate his view that when the river dries up the lake will be a refuge for the fish as well as a reservoir at times.

“I recommend that approval should be given.”

Without taking a vote the committee agreed to grant planning consent.



The St Mary Bourne “Lake” on 10 February 2012
Photo: M. Widén

THE TIMES

17 July 1991



The Bourne in Hampshire near Hurstbourne Viaduct, where water is to be pumped out and fed one and a half miles upstream to revive a dry stretch

Water recycling may save trout stream

By Robin Young

A CELEBRATED Hampshire trout stream will shortly run with recycled water. To overcome persistent flow failures in the Bourne, a tributary of the Test, The National Rivers Authority is proposing to collect water near Hurstbourne Viaduct and pump it one and a half miles back upstream to St Mary Bourne, whose residents have become used to a dry and unsightly river-bed beside their village street.

In 1797, when Jane Austen’s brother was married at Hurstbourne Tarrant church, overlooking the stream’s upper reaches, the coach had to go through a foot of water because the river flooded the road. As late as 1928, Sir Charles Boys, FRS, a scientist living locally, was arguing that St Mary Bourne’s bridge with three narrow arches should be replaced by one without piers in the waterway to avoid the danger of repeated floods.

Now a spate of dry years has convinced the authority that something must be done if the river is to keep running. The plan is to gather water below the village cress-beds, which have been licensed to abstract large quantities of water since 1965, and to pump it back to St Mary Bourne through two 6in firehoses, releasing it in an area revealingly known as Swampton to run back down the dried-up river course.

If the plan does not work, the NRA says, it may be necessary to contemplate lining the river-bed with clay, which would turn the Bourne from a chalk stream to an artificial river more resembling a fast-flowing canal. It will also be necessary to monitor environmental effects of the scheme. It is feared that chemical treatments at the cress-beds may make the recycled water poisonous to freshwater shrimp.

The Bourne, whose valley was admired by William Cobbett and whose junction with the Test was celebrated by the singer Harry Plunket Greene in a book, *Where the Bright Waters Meet*, is one of four Hampshire streams threatened by drought. The authority says, though, that there should be no need to carry recycled water further back up-stream because above St Mary Bourne the river has always been a “winter bourne”.

MW

Longparish

- 11 9am - L2SOTM - Cricket Club
- 12 7.30pm - Parish Council Meeting - on line
- 14 10am - Village Clean Up Day - Playground
- 16 9.15am - Litter Picking - Village Hall
- 23 12 noon to 2pm - Friday Lunch Club - Village Hall

Hurstbourne Priors

- 24 7pm - Harvest Take Away Supper and Quiz
- 28 7.30pm - Parochial Church Council Annual Meeting

St Mary Bourne

- 20 7.30pm - Parish Council Meeting - on line
- Saturday mornings** 10.30am to 12.30pm
The Community Library
Village Centre Club Room

Andover Artisan Market - Sunday 20th October
10am to 2pm - High Street

If you have a seasonal photograph that could be used for the front cover of Hill & Valley, please send it to one of the editors listed below. Please send any contributions in portrait and jpg format if possible.

Front cover photograph: 'Autumn on the Middleton Estate, Longparish' - Tom Bremridge



Photo: 'St Andrew's, Hurstbourne Priors' - Martin Coppen

Hurstbourne Priors Village Hall: Mrs Anne Yeaman, e: hbpvillagehall@live.co.uk
Longparish Village Hall: Mrs Jacqui Healey, ☎ 07748 322533, e: villagehall@longparish.org.uk
Longparish Community Hall: During school open hours, Mrs Christine Leach ☎ 01264 720317
St Mary Bourne Village Centre: Miss Angela Cook, ☎ 01264 738158, e: smbvillagecentre@btinternet.com
The Village Halls remain closed for most bookings until further notice

Copy date for the November 2020 Hill & Valley edition: Wednesday 14th October 2020

Your contributions - letters, pictures, comments or articles are always welcome. Contact your parish editor by the copy date.

Printed by **The Andover Printing Company Ltd** ☎ 01264 334220 www.andoverprinting.co.uk © Hill & Valley Parish Magazine 2020

Parish Editors

Hurstb' Priors: Fenella Williams, Old Parsonage, H'b Pr,
☎ 01256 892081, e: fenella.williams@btopenworld.com

Longparish: Georgina Montague, Westbrook Cottage,
☎ 01264 720 493, e: hillandvalley@longparish.org.uk

St Mary Bourne & Woodcott: Pearl Pritchard, Downhams
Cottage, Egbury, StMB, ☎ 07869 727 452,
e: pearlpritchard@outlook.com

Editorial: Tom Bremridge, Longparish ☎ 01264 720 540
Michael Widén, St Mary Bourne ☎ 01264 738 250

Production/Distribution: Tom Bremridge, Bramblegate,
Longparish, ☎ 01264 720 540, e: tbremridge@gmail.com
Michael Widén, Batsford Hs, StMB, ☎ 01264 738 250,
e: m.widen@btinternet.com

Advertising: Michael Widén, Batsford House, StMB,
☎ 01264 738 250, e: m.widen@btinternet.com

Websites

* Hill & Valley pages on-line

Hurstbourne Priors: www.facebook.com/HurstbournePriors
Parish Council: www.hurstbournepriors-pc.org.uk *

Longparish:
Parish Council: www.longparish.org.uk *

St Mary Bourne:
Parish Council: www.stmarybourne-pc.gov.uk *
Village Centre: www.stmarybourne.co.uk

Village Scrapbook: Sue Dixon - e: suedixon2005@hotmail.co.uk

Stoke Village Fund: <http://www.svf.btck.co.uk>

Bourne Valley Signpost:
<https://www.facebook.com/groups/BVSmember>

The Bright Waters Benefice: www.brightwatersbenefice.com