

Issue No. 247

Hill & Valley

THE PARISH MAGAZINE OF HURSTBOURNE PRIORS, LONGPARISH, ST MARY BOURNE & WOODCOTT

50p

April 2021

Happy Easter



Dear Friends,

April is upon us, the gateway to spring can, of course, be very mixed with hail and even snow, whilst at other times we may bask in warm sunshine, and often we can experience all four seasons in one day! Day by day the polyphony of morning birdsong increases and we cannot but notice the garden waking up with fresh buds and plants, all of which I find quite exciting. The new life and new beginnings that April speaks of, is something very relevant to us all as we begin to embrace change and adapt to life after Covid in anticipation of lockdown being eased.

Life, new beginnings and hope are also central themes of the Easter story. Christian hope is not rooted in a distant or romantic past, remembering a one off event two thousand years ago. Easter faith is prophetically grounded in the here and now as the death and resurrection of Jesus spans across time and space and speaks to us today. If we look about our world today, we can see the tragic consequences of the Pandemic across our planet, and indeed our own nation, we also note the human condition is very much alive as our broken humanity continues to inflict war and violence on other human beings. In all these situations, Holy week and the Passion of Christ points to the opportunity of life transformed, redeemed and transfigured; Easter life.

Jesus was no stranger to suffering and humiliation, and if we look hard enough, we will see he is there walking with us in our own troubles, ready to bring peace that sustains us. With the dawning of Easter day we are offered a new life with God and God, in turn, calls us to share his peace with the world. One of the positives which has come out of this awful pandemic, is to see the community spirit which abounds in our villages, we are all so grateful to those people who have worked hard to help each other and look after the needs of those who are vulnerable and lonely.

You are warmly invited to join us at one of our Easter Day Eucharist celebrations, all are welcome, those of faith and those of none, this will be a space to soak in some peace, breath in some Easter air, and just maybe, the new beginning you have been waiting for this year.

A blessed and happy Easter to everyone!

David

***The Reverend David Roche
Area Dean and Priest in charge,
All Hallows, Whitchurch with Tufton and Litchfield***

Services in the Parish Churches

April 2021

Our churches will be open on Easter Day and services will resume in Church. **But the times may be different from previous years, so please check.**

Because of the need for safety for all in our Benefice, each week we will have an 11am Zoom service - see * below. If you are in a vulnerable category or are unsure, please stay safe, stay at home and come to Zoom, at least for a little while. All Zoom details (incl. the link) are available from the Church wardens or Dodie Marsden.

Leading up to Easter Sunday - Zoom services:

1st April - Maundy Thursday	7.30pm
2nd April - Good Friday Mediation service	4.00pm
3rd April - Holy Saturday Service of light	6.00pm

4th April - Easter Day

Hurstbourne Priors	11.00am	<i>Easter Communion</i>
Longparish	11.00am *	<i>Easter Communion</i>
* Easter Day Zoom Service for those unable to attend Church		
St Mary Bourne	11.00am	<i>Easter Communion</i>
Woodcott	9.30am	<i>Easter Communion</i>

11th April - Easter 2

Hurstbourne Priors	6.00pm	<i>Evensong</i>
Longparish	9.30am	<i>Morning Prayer</i>
St Mary Bourne	9.30am	<i>Holy Communion</i>
Woodcott	No Service	
* Home Zoom Service at 11.00am		

18th April - Easter 3

Hurstbourne Priors	9.30am	<i>Holy Communion</i>
Longparish	9.30am	<i>Holy Communion</i>
St Mary Bourne	11.00am	<i>Easter Communion</i>
Woodcott	No Service	
* Home Zoom Service at 11.00am		

25th April - Easter 4

Hurstbourne Priors	11.00am	<i>Family Worship</i>
Longparish	11.00am	<i>Holy Communion</i>
St Mary Bourne	9.30am	<i>Holy Communion</i>
	6.00pm	<i>Evensong</i>
Woodcott	9.30am	<i>Matins</i>
* Home Zoom service at 11.00am		

Midweek Evening Prayer

There will be a short Zoom service of evening prayer or of Thanksgiving on a Thursday. Timings to be confirmed.

Each week there is mid-week reflection available on a Wednesday or Thursday.

Again please note that from April all four churches will have services at 9.30am or 11.00am and there will be Evensong fortnightly at 6 pm in the Benefice.

Benefice Contacts during the interregnum period:

For all enquiries about Baptisms, Weddings, Funerals in any of the parish churches, please contact Karen in the Benefice Office
☎ 01264 738 308 or email: office.brightwaters@btinternet.com

If you wish to contact the Revd Canon Dodie Marsden, please call ☎ 01264 738 211 or email: dodie.marsden@gmail.com

If you are unable to contact Dodie, in an emergency, please call ☎ 01264 720 215 or ☎ 01264 738 489

• For details of **Roman Catholic Services** in Whitchurch or Andover ☎ 01264 352829

• **Methodist Minister** for our parishes: The Revd Rachel Borgars, 11 Lapwing Rise, Whitchurch, RG28 7SU ☎ 01256 895878 or email: rachel.borgars@methodist.org.uk

From the Church Registers

Funerals

"Into God's loving care we commit you ..."

Friday 12th March - St Mary Bourne
Tony Grunsell
Funeral at Basingstoke Crematorium

Weddings

"Marriage is a gift of God in creation ..."

Saturday 20th March - St Mary Bourne
Rob Savill and Mimy Grander
were married at St Peter's Church



Serving the local community for over 15 years

Complete **h₂O** Services

Plumbing & Heating Engineer

OFTEC registered & Grant approved

24 hour call-out service

Registered
Oil Heating
Business



Contact 07990 897372

info@complete-h2o.co.uk

www.complete-h2o.co.uk

TEST VALLEY GARDEN MACHINERY LTD

INTRODUCTORY OFFER:
FREE COLLECTION & RETURNS
LOCAL RESTRICTIONS APPLY

— *Never knowingly undercut* —

Tel: 0800 107 3263

FOR ALL YOUR
REPAIRS • SALES • SERVICE

www.tvgm.uk



RAMPTON ELECTRICAL CONTRACTORS

your local professional electrician covering
all areas of Wiltshire & Hampshire

All domestic & commercial electrical
works undertaken - Bespoke Lighting Specialist

01980 734004

Michael@Ramptonelectrical.co.uk

P C BUTLER BRICKWORK

General and Traditional Building
Roofing, Maintenance & Repairs,
Painting & Decorating

No job too small

01256 781830 or 07833 586250

paulbutler3@hotmail.co.uk



We can help you meet all your pet and equine healthcare needs, with professional and caring staff who can treat your animal at a time that suits you. Our vets offer an emergency service giving you 24 hour reassurance.

... we're here to listen

24 hour phoneline: 01635 254544

OUR SURGERIES:

Burlins Surgery, Burlins,
East Woodhay, Newbury,
Berkshire, RG20 0NU.

Foxhold House Surgery,
Crookham Common, Thatcham,
Berkshire, RG19 8EL.



THE
COACHHOUSE
VETERINARY SURGEONS

www.coachhousevets.com

Robert Allnutt Building & Garden Maintenance

I am based in Longparish, my work is varied and has included Building a Bridge over a River, Bespoke fitted cupboards Shelves and bookcases, Kitchen and Bathroom makeovers, Raised garden beds, Gates and Fencing. I also make Log and Bin stores.

See me on Facebook

**Robert Allnutt Building
and Garden Maintenance**

Message or phone to quote for your
future indoor or outdoor projects

Mobile 077 33 212 809
rob.allnutt@yahoo.co.uk



FREEDOM BI-FOLDS

Bifolding and Sliding Doors – Windows - Residential Doors



Contact us today:

01264 301 302

info@freedombifolds.co.uk

Visit our showroom at Andover Down, SP11 6LJ

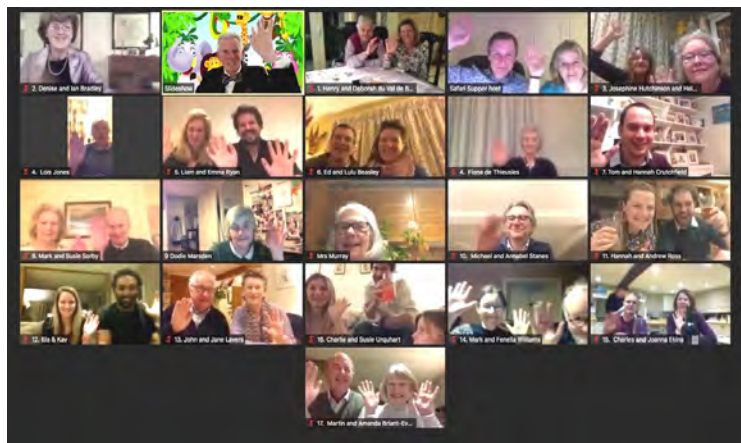
WEATHER – FEBRUARY 2021

Total rainfall for month	84mm	3..30in
It rained on	14 days	
Rainfall same month last year	184mm	7.24in
Total for 2021	210mm	8.26in
Total for 2020	309mm	12.16in
Max temp (on 27 th)	16C	60F
Min temp (on 12 th)	-4C	24F
Number of frosts	11	

This February, we had considerably less rainfall (100mm or nearly 4ins) than last year.

John Smail

FOOD GLORIOUS FOOD!



Not to be outdone by pandemic restrictions, the Hurstbourne Priors 2021 Safari Supper took place on the evening of Saturday, 6th March, via Zoom.

The benefits of not having to book babysitters, drive or leave the comfort of their own home on a cold, dark winter evening attracted villagers from far and wide. Tablets and laptops were fired up, some bravely overcoming their Zoom-phobia, to experience the luxury of meeting and socialising with fellow villagers, whilst enjoying good food and not worrying about the drink/drive limit. Many drew inspiration for their menus from the Hurstbourne Priors Cookbook.

Participants logged in to the virtual Village Hall for a meet and greet session prior to being transported to their first destination for drinks and nibbles. Ian introduced the evening and Dodie set the tone delivering a humorous and amazing Grace.

In parallel with the traditional format Safari Supper evening, couples then travelled around the village to different houses, meeting three new couples each time for Starters, Mains and Pudding. Virtual chauffeurs, in the form of Ann and Crispin were behind the Zoom wheel, navigating people to their destinations throughout

the evening. A 10-minute video showcasing our lovely surroundings and food, accompanied by music and peppered with silly jokes, was shown between courses to entertain and provide the countdown before serving the next course.

The evening ended with everyone congregating back in the virtual Village Hall for coffee and chocolate truffles lovingly crafted by Lulu Beasley, and to share more silly jokes.

At the end of the evening, exhausted laptops and iPads were parked up for the night and chauffeur caps hung on hooks, as Safaritarians made their weary way up the wooden hill to Bedfordshire – Oops! Don't we all love our sat navs? We'd be lost without them.

Not sure about my new sat nav though. I was travelling through my local safari park, and it said bear left. It was clearly an elephant.

Liam: What did the pizza say to the delivery guy?

Emma: I don't know, what did the pizza say to the delivery guy?

Liam: You don't pepper-own me.

Liam: Why does the mushroom get invited to pizza parties?

Emma: I don't know, why does the mushroom get invited to pizza parties?

Liam: Because he such a fungi.

A big thank you to all who participated and we look forward seeing you and others at 2022's Safari Supper in person.

*Ann, Crispin, Emma, Liam, Denise and Ian
Your Safari Supper Team*

VILLAGE TEA TOWEL

Calling all Hurstbourne Priors Villagers!

As part of fundraising efforts for the village following the cancellation of the 2021 May Fair and to coincide with the 2021 Census, a tea towel will soon be created for (hopefully) all residents in the village. The idea is for each resident to draw a matchstick style portrait of themselves which will then be printed onto a tea towel alongside everyone else, much like those you may have been involved in or bought from schools.

An email with full details and how to get involved will be sent around soon, and the tea towels will be available to purchase later in the year. If you'd like to join in but haven't received the email, contact Ed Beasley at hurstbournepriorsmayfair@gmail.com



WHITCHURCH SILK MILL

**Post-lockdown Re-opening**

Following the government's roadmap out of lockdown announcement in February, we are looking forward to a lovely summer at the Mill. For now, the Mill and its grounds and shop are closed, but the café is offering takeaways for local people from Friday to Sunday, 9.30am to 4.30pm. Please do not travel to the site. The Mill will open its outdoor café service on 12th April, Tuesday to Sunday, 10.30am to 5pm. If everything goes to plan we will reopen the Mill on 17th May, but if this cannot happen we'll let you know.

More Ripping Yarns

Have you seen our new Ripping Yarns videos about the possible derivations of the expression 'pop goes the weasel' and the origins of 'to pull the wool over someone's eyes' and 'dyed in the wool'? They are great fun and are available on the Mill's Facebook page. The expression 'to pull the wool over someone's eyes' has two possible sources: a legal one and a parliamentary Act. Lawyers have historically worn woollen wigs, and pulling the wool might have referred to metaphorically pulling a lawyer's wig over his eyes, obscuring the truth/hoodwinking him. In the 17th century, epidemics badly affected the health of the population and the country's economy and led to a decline in the wool and weaving trades. In 1667 an Act of Parliament designed to kickstart these industries made it compulsory for bodies to be buried in woollen shrouds. And, so, people saying 'Don't you think you can pull the wool over my eyes' may have meant 'I'm not dead yet!'.

Objects in Focus

In 'Objects in Focus' we'll be revealing the hidden history behind everyday items in and around the Mill. New episodes will be released every two weeks. The first episode is now available to view on our YouTube channel and focusses on the weaver's bench on the Mill's third floor. In the past we believe it may have been used to spin silk: a spinning wheel would have been fixed into the various holes visible in the removable centre panel of the bench. Taking the panel out and looking at the underside reveals signatures dating back to the early 20th century. The story behind this is that when a new weaver started at the Mill they would write their name on the back of the panel as a sort of 'initiation' process – a hidden record – and in our video we show you the signature of Valerie Nash, dated 1 April 1948. Both Valerie Nash and her sister Pat worked at the Mill. Pat worked upstairs but remembers going down to see Valerie, where she worked on the looms in the din of shuttles flying backwards and forwards.

Another weaver at the Mill was Thelma Painter, who worked alongside her mother, Marjorie. Thelma recalls some of the weaver's antics: 'Sometimes the girls would wash their hair in the morning before coming to work at

the Mill, concealing their curlers underneath their headscarves whilst they operated their looms!'

More recently, the bench had been used as a seat to sit on during tea breaks, but unfortunately this has led to some of the names being rubbed off! So, to preserve the initiation tradition going forwards, all current and future weavers will be adding their names to the loom guard, a modern attachment, instead.

Regular Events

Our regular events including Mini Millers, Young Millers and Pins & Needles will resume as soon as we're able.

Contact: info@whitchurchsilkmill.org.uk – 01256 892065 – www.whitchurchsilkmill.org.uk



Photo: Ian Bradley

TOWN TWINNING PROPOSAL

In the context of Brexit, the Town Twinning Association (www.twinning.org) has reaffirmed the desirability of forming links with our continental neighbours, and after careful research they have concluded that a suitable match for the Bourne Valley would be the Val de Beaune (Beaune Valley) in France. Beaune is a walled town at the centre of the Burgundy winemaking region. Surrounded by the Côte d'Or vineyards, the cobbled town is renowned for an annual wine auction held at the Hôtel-Dieu (Hospices de Beaune).

Links between the two valleys actually go back more than 700 years to the times when much of the land in the Bourne Valley was held by the bishops and abbots of Winchester Cathedral, who at the time were largely resident at Bîcêtre, near Paris. The name Bîcêtre comes from the manor built there by John of Pontoise, Bishop of Winchester (often known as "John the Fool") at the end of the 13th century. The name of this Manor of Winchester was corrupted into Vinchestre, then Bichestre, and eventually Bîcêtre. As well as enjoying the living provided by the church's holdings in southern England, the bishop also enjoyed the fruits of land holdings in the Beaune Valley.

Indeed scholars have opined that the names of villages in the Val de Beaune - Beaune Tarond, Sainte Marie de Beaune and Beaune Preux ("preux" is an old French word meaning doughty or chivalrous) - may have influenced the naming of their Hampshire counterparts.

If you would like to get involved in the twinning association, please do not hesitate to get in touch with

Ms April Fool at www.twinning.org

NEWS FROM TESTBOURNE COMMUNITY SCHOOL

At Testbourne, the arrival of Spring marks the return of a family of ducks to our Jubilee Garden. They are always a welcome sight despite the noise of their chatter!

Students have now returned to school after weeks of home learning and we slowly transition back into normality. We are proceeding with cautious optimism, and all COVID-19 control measures are still in place. These include mask wearing, intense cleaning of "touch points", a one-way system, zoning, staggered breaks, increased ventilation and more. We are extremely proud of our students and staff for adapting so quickly to these measures and the fact that students are so ready to comply with the measures epitomises the character of Testbourne children.

We have recently finished our student Covid testing programme. This involved over 2500 individual tests in a period of just two weeks. It was a huge undertaking but, once again, many staff and a large army of volunteers went above and beyond to ensure that the operation was as smooth and efficient as possible. It reassures us that there was not a single positive test, and that leaves us feeling optimistic for the coming weeks as staff and children transition to home testing. We are extremely grateful to the large number of staff and community volunteers that supported us and know that you will join us thanking them in your own way.

This year, our new intake students received a welcome pack in the post consisting of a pen, a Testbourne shield badge, an events pamphlet, a travel leaflet, a 'how-to' flyer, and our Testbourne Student handbook, as well as personalised welcome letters for students and parents from the Headteacher. These packages have been well received, and we have received many emails from parents to say their child is excited to be joining our school. This is just the beginning of a welcome package that will continue over the next few weeks to give children who have had a very disrupted year 6, the best start possible in September.

With the Easter holiday approaching, we wish you and your families well as we all look forward to the summer term.

*Mr Jon Beck, Headteacher
Testbourne Community School*

WORD OF THE MONTH



Judging from the contents of our village cookery book and other events featured on these pages, we are seemingly a RIPARIAN neighbourhood of ARISTOLOGISTS – those who practise the art of ARISTOLOGY - being the art and science of cooking and dining.

Barbara Carrodus

GOODBYE TO DON AND ANNE YEAMAN

This month we sadly say goodbye to Don and Anne as they leave our village for pastures new. They both were extremely active in many aspects of our village life.

Anne's banking skills were much appreciated when she joined Helen, Mark and Fenella as Treasurer in taking over the organisation of the May Fair at a time when it needed a lot of support to enable it to continue in a viable format.

Don quickly lent his expertise in enabling the provision of electricity across the field which made a tremendous difference to the attractions on offer on the day. He was always on hand to sort out any crisis which arose. In addition, he became the "unofficial" wandering photographer throughout the day and quickly established himself as the "Village Photographer" for many village occasions providing the photos for The Hill and Valley.

A keen gardener, Anne was a stalwart helper to Precelly Murray both in preparation of the plants throughout the year and working on the Plant Stall at the May Fair.



Anne busy on the Plant Stall

Both Anne and Don served on the Village Hall committee where Anne was the hall Booking Secretary for many years.

Anne also took over the co-ordination of our village Ladies' Coffee Mornings from Doreen.

Wherever help or support was needed, either or both of the Yeamans could always be relied on.

Don and Anne will be sorely missed in all areas of village life. Both leave behind a great legacy of involvement in our community for which we are extremely grateful. We do hope that when life gets back to some sort of normality, they will return in order that we will be able to express our heartfelt thanks to them in person soon.

In the interim we wish them safe and happy travels as they embark on this next stage of their journey.

From all your friends in Hurstbourne Priors

I am sorry we are unable to include a picture of Don. We have a wonderful collection of the photos he has taken over the years, but it seems he was more often behind the camera rather than in front of it! - Editor



T C SCOTT
ST MARY BOURNE
GARAGE LTD

MOT Test Station

Repairs & Servicing of all
makes of vehicle.

Diagnostics

Welding to MOT standard

Phone (01264) 738606

Bourne Valley PYO

We grow seasonal fruit and
vegetables in the heart of the
Bourne Valley

For a great day out with the
family, come and see us.

Contact – 01264 738 888

www.bournevalleypyo.co.uk



Having a house clearance or work done?



Skip the tip and hire a skip!

Book your skip hire online with
friendly next day service!

www.rcollard.com

01264 720 257

ETHERINGTON
CONTRACTING LTD

01256 893150 / 07901 771080
www.gecontracting.co.uk



LANDSCAPING • GROUNDWORK • PLANT HIRE

How to contact your Member of Parliament Kit Malthouse

@ kit.malthouse.mp@parliament.uk

01264 401401

Or write to me at my constituency office:

2 Church Close, Andover, SP10 1DP

*I hold regular surgeries
for all constituents in
North West Hampshire*



we show you the way

It can be difficult to be confident about what your financial future looks like. Kingsley Financial offers different options to help you find your way:

- 1 **Financial Planning Service:** a detailed review of where you are & the plan to follow.
- 2 **Financial Health Check:** figure out what retirement will look like
- 3 **Financial Advice Transaction:** put in place an arrangement to meet a need
- 4 **Financial Ideas Discussion:** find out what the jargon really means to you

CHARTERED FINANCIAL ADVICE

impartial, personal, independent



www.kingsleyfinancial.co.uk

enquiries@kingsleyfinancial.co.uk

01256 896203



Peter A Sudlow
Chartered Wealth Manager
CFP™ Dip PFS Chartered MCSI



Eamon Keelan
Director & Chartered Financial Planner
APFS CFP™ Chartered MCSI



SOLLA
Society of Life Actuaries
ASSOCIATE

**The Personal
Finance Society**

Kingsley Financial Management Ltd is authorised and regulated by the Financial Conduct Authority

The Half term Lego Challenge Master builders of Hurstbourne Priors embraced the latest Village Challenge with great enthusiasm and imagination. Great fun for all generations, with entries from pre-schoolers to teens, with family teams including siblings, aunts, uncles, parents and grandpas! All the winners were awarded a certificate and small prize. A big thank you to the budding architects, engineers and artists who took part – we raised a fabulous £85 towards village amenities!

The May Fair Team



Best Team Engineering Project

Team Sorby
Robot



Best Multi-media Project

Team Saddler
May Fair ice cream truck



Best Infant Landscape

Hugo Briant-Evans
Vintage Moonbase



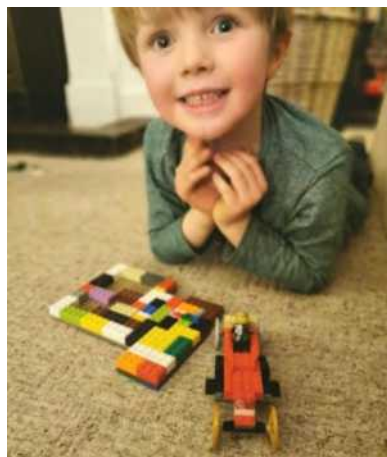
Architects of the Future Award

Thomas & Martha Stanes
Eco Community



Best Infant Engineering Project

William Ryan
Marble Run



Best Infant Car

Alfred Brunwin
Car & Mosaic



Village Pets' Favourite Build

Megan Brunwin
Posh Stable



Best Infant Build

Archie Ross
Knight Bolter vehicle



Best Tot Build

Miles Ryan
Castle in Duplo



Best Team Build

Rose & Mark Briant-Evans
Hurstbourne Priors Viaduct



Best Fantasy Build

Lottie & Fred Tufnell
Scorpion Castle



Design Award

Ivo Briant-Evans
"Axe"

MARCH HOUSE

Web Design
Logo Development
Digital Marketing
Digital Publishing
Branding
HNW Tech Tutoring

lizzie@marchhouse.co.uk
www.marchhouse.co.uk
0777 622 4985



DIRTYDOGGIES & HAIRYHORSES

Established in 1987

Highly experienced horse groom & dog beautician offering a friendly, mobile grooming service. Have your dog bathed, clipped, trimmed or hand stripped in your own home. Nail clipping. Small-to-medium sized dogs only. Clipping, trimming, mane and tail pulling for horses and ponies. Plaiting for competitions, etc. Please contact Christine Allen
07890 520684



Andover Carpet Cleaning Co.

Carpets, Rugs, Suites,
Sofas, Recliners etc.

Scotchguard &
Deodorise Treatment

Call 01264 334636
Mobile
07850 677 761

The Shearing Shed Dog Grooming

Rachel Brown
07460832214

4 Grenage Cottages
Litchfield RG28 7PT



theshearingshed1@gmail.com



TREE AND GARDEN SERVICES

Contact Drew

01256 893566 ~ 07720 842451

monkeybusiness77@hotmail.co.uk

NCHARB ~ Fully Insured ~ Free estimates and advice

QUALITY PRIVATE DENTISTRY

GD Gwynne
Dental



Complete Dental Care



Cosmetic Dentistry



24/7 access to your
dentist for advice
and emergencies



Children's Dentistry



info@gwynnedental.co.uk



www.gwynnedental.co.uk



01256 321 945



HEATSOURCE BOILERS LTD

All makes of oil and gas boiler
servicing, repair and replacement.

07952 671669 / 01962 761339

TAYLOR & KERBY ANTIQUE CLOCK REPAIRS



With a combined 35 years in the craft, Taylor & Kerby are specialists with an enthusiasm for sympathetic repairs and thorough servicing of almost any mechanical clock.

Based in Weyhill near Andover, we cover all surrounding areas of Hampshire, Wiltshire and Berkshire within a 25-mile radius for collection and delivery.

www.taylorandkerby.co.uk
Unit 5, The Fairground Craft Centre, Weyhill,
HANTS, SP11 0QN
01264 772230

Frenches Farm livery

- Beautiful livery on working farm
- Spaces available for DIY, competition, full and part livery
- Access to all facilities including indoor and outdoor arena, lunge pen and jumping field
- Stunning off road farm hacking routes and local bridal ways
- Well - kept summer and winter paddocks for daily turn out

Frenches Farm Livery

Facebook: Frenches Farm Livery

Website: www.frenchesfarmlivery-andover.co.uk

Email: anna.frenchesfarm@gmail.com

Find us in **Little London, Andover, SP11 6JG**

Please email for more information



Aardvark

PROFESSIONAL OVEN AND CARPET CLEANING SERVICES

AARDVARKOVENCLEANING.COM • AARDVARKCARPET-CLEANING.COM

07783 810806

SMB

ST MARY BOURNE VILLAGE SHOP

& post office

I love the month of April. Not least because it's my birthday month and in a very immature way I get completely giddy with excitement about my birthday (and anyone else's, come to think of it). But I also love it for its gentle warmth after the long cold winter, the beautiful blossom on the trees and the feeling of optimism for the long summer months stretched ahead of us. It has hope and optimism oozing from every pore and even the odd April shower can't dislodge the feeling of wellbeing. If the shop had feelings (which I think it does), it would feel the same about April. The children stay out on the rec for longer, walkers stride out upright rather than hunched against the winter gales and rain, cyclists increase in number and life happens all around.

To keep up with this pace the shop is well stocked with everything you may need. All the daily essentials along with fantastic local produce and delicious treats. Meat from Greenfields, Bere Mill Butchery and Oaktrack Smallholding continues to sell well, and we love supporting small local producers. Chalkstream Trout is also a big hit and another local producer that the shop is proud to support.

On a sadder note, we are very sorry say goodbye to our fabulous Assistant Manager, Charlotte. Charlotte joined us in July last year but has been head hunted for a fantastic full-time role that even the delights of working at the shop couldn't keep her from. We wish her all the best for the future and thank her for all her hard work and dedication. You will be missed, Charlotte! Thank you. Now that we are coming out of a turbulent 12 months, we hope that you feel the shop has been there for you. We like to think we have been and always will be. Please don't forget us now that you can finally spread your wings further afield.... and thank you for your continued custom. It means a lot. Lara and the team x



Village postcards

now available from the Village Shop at 30p each.



March 2021 - 1☺☺ Club Draw:

£50 - Grace Culley **£20** - Peter Blair
£20 - Peter & Camilla St Quintin **£10** - Jacob Culley

Easter bin collections

Over the Easter break there will be no changes to the bin collections, even on Good Friday. So put your grey bin out as usual before 7am, together with your green bin on the normal recycling week.



HELP NEEDED URGENTLY AS CHURCH REOPENS FOR SERVICES

If you could spare approximately one hour a month, please volunteer as a CHURCH CLEANER.

This would entail your cleaning a section of the church, at any time that suits you, during a specified week once a month.

People find it is rewarding and gives a very personal time in the church. In fact, a time to really get to know the wonderful building and its treasures.

If you are interested or would like to know more of what it involves please contact Eve Lind-Smith

01264 738681

P.J.ROPER

Traditional Builders

Traditional Building & Period Property Specialists

CONTACT:

Office - 01256 892993

Mobile: 07770 368176

kathleenroper@btinternet.com

Richard Steel & Partners

The Family Owned Funeral Directors

(Serving Hampshire since 1860)

Alderman House, 12-14 City Road, Winchester

☎ **(01962) 862333**

www.steelsfunerals.co.uk

BELVEDERE TRAVEL



Catered gulet holidays in Turkey

www.belvederetravel.com

email info@janeblount.co.uk

01264 738533 and 07884003082

BOURNE Again Feet

Hilary Steeden MGFHP MAFHP

Foot Health Practitioner

Tel: 01264 738 554

Mob. 07787 703 900



. Problem Nails .Verrucas

.Corns .Cracked Heels

.Hard Skin .Fungal Infections



BINLEY HOUSE FARM B&B

Bed & Breakfast
in the quiet hamlet of Binley
in the Hampshire countryside
near the charming village of
St Mary Bourne. En-suite
bedrooms, full English or
continental breakfast and a
warm welcome.

Horse B&B for two horses also available. Binley House Farm is home
to champion Arabian horses. Email: binleyhousefarm@gmail.com
or ☎ **01264 738343** www.binlevstud.com

WEST JOINERY

Bespoke doors,
windows,
kitchens,
wardrobes,
bookcases.

*For all your
joinery needs*

07717 570748

Julian@uswests.co.uk



JULIAN WEST CARPENTRY
a company built on reputation

Loft Conversions . House
refurbishments
Kitchens . Bookcases . Wardrobes
General Carpentry and
construction

We pride ourselves on offering
quality service and workmanship
which enables you to see the full
potential of your property

For further details please contact
us on 01264 860392
or 07717 570748

Email: julian@uswests.co.uk

BREACH FARM WOODLAND BURIAL GROUND ST MARY BOURNE, SP11 6DQ

A beautiful woodland burial ground
overlooking the Bourne Valley

Single, Double and Ashes plots available.
Area for pets.

For further information/request a brochure:-
Mobile: 07789 888399

Email: lisa@breachfarmwoodlandburialground.co.uk

www.breachfarmwoodlandburialground.co.uk



Whitchurch Wills

FREE INITIAL CONSULTATION

"FRIENDLY, ACCESSIBLE AND QUALITY SERVICE"

YOUR LOCAL WILL WRITER FROM WHITCHURCH

- Will Writing
- Review of existing Wills
- Lasting Power of Attorney
- Estate Planning
- Trusts
- Probate Services

Clare Datta, BA(Hons) MSWW
T: 01256 896336 M: 07810 455581
E: claredatta@whitchurchwills.co.uk W: www.whitchurchwills.co.uk



Your Parish Council

Dates for Full Parish Council Meetings for the next 12 months

- Tuesday 20th April • Tuesday 18th May
- Tuesday 22nd June • Tuesday 20th July
- Tuesday 17th August • Tuesday 21st September
- Tuesday 19th October • Tuesday 23rd November
- Tuesday 21st December • Tuesday 18th January 22
- Tuesday 22nd February 22 • Tuesday 22nd March 22

Summary Report from Jan, Feb & March 2021 meetings of St Mary Bourne Parish Council

www.stmarybourne-pc.gov.uk

County Councillor's Reports - Cllr Tom Thacker reported that the HCC Precept increase would be 4.99% of which 3% was allocated to Adult Social Care. He also reported on Covid cutbacks including non-repair of roads and services. HCC Countryside Access team had investigated Derrydown road but repairs to private roads were the responsibility of property owners and businesses that share access. Cllr Thacker would stand again at the May 6 elections and was in political "purdah" until then.

Borough Councillor's Reports - Cllr Falconer reported on local developments including the nitrate issue in the Solent, the Gangbridge Lane development application, Derrydown stables and the Methodist Chapel. B&DBC options for the public toilets at Bourne Meadow were a) for B&DBC to hand them over to the parish council to maintain & operate or b) for them to be closed.

SMB Parish Council Business - Highways: Kerbs and pavements within Bourne Meadow and shop vicinity would be repaired within 2 months. The council was waiting for repair quotes for the Jubilee Lamp in SMB Square. The Sustainable Bourne Valley group were investigating lighting around the parish as part of the "Dark Skies" initiative for environmental and other factors. **Footpaths:** Discussions were ongoing about Footpath 37 and pedestrian access to Bourne Meadow.

Recreation Ground & Lake: Fencing of playground & work on planters & hardstanding completed. Council still waiting to hear from Hampshire Wildlife Trust & Environment Agency about restoration of lake/river bank & from SSE about tree trimming near electricity lines in lake vicinity. Two parents of young children had been co-opted onto committee to investigate improvements to play areas and liaise with B&DBC and parish council. The Chair will meet Hampshire Bat Group to research suitable sites for bat boxes. **Finance:** The Parish Precept for 2021/22 (15.8%) had been forwarded to B&DBC for payment.

Tony Grunsell - On behalf of the parish the Chair paid tribute to the outstanding service that Tony Grunsell had given as a parish councillor. His loss was sadly noted.

Next Full Parish Council Meeting:
Tuesday 20th April, 19.30

Newly registered Planning Applications April 2021

Fell approximately 14 large Ash trees suffering with dieback - **adjoining Stoke Hill Road, Stoke** - T/00101/21/TCA - 24 February 2021

Erection of two storey side extension including alterations to roof following demolition of existing single storey side extension, gabled roof and garage - **Beech House, St Mary Bourne** - 21/00779/HSE - 3 March 2021

Recent Local Planning Authority Decisions

Variation of condition 1 (plan numbers) and removal of condition 12 (windows and doors) of permission 18/00784/FUL to allow amendments to the conversion of Methodist Chapel to 1 no. dwelling with extensions and renovation work - **Methodist Chapel, Stoke Road** - 21/00162/ROC - **Granted**

Diversion of footpath in connection with application for planning permission 20/00028/FUL - **Rowe Farm, Gangbridge Lane** - 21/00122/FD - **Application Withdrawn**

Erection of single storey rear extension following demolition of conservatory - **Pippins, Church Street** - 21/00116/HSE - **Granted**

Erection of two storey extension - **Gate Cottage, School Lane** - 21/00269/HSE - **Granted**

Erection/relocation of an existing Agricultural Barn, for storage of fodder including hay & straw - **Jones Farm, Stoke** - 21/00143/AGPD - **Application Withdrawn**

Parish Council Meetings

The parish council will currently meet only when required to discuss urgent business and these meetings will be held remotely. As usual, notice of any meeting will be published four days in advance on the parish council website and the noticeboards. You will be able to access the meeting remotely. But to allow for smooth running, if you are planning to raise a matter with the parish council you are asked to submit it in writing in advance to clerk@stmarybourne-pc.gov.uk.

All minutes and reports can be viewed at
www.stmarybourne-pc.gov.uk

Details of all Planning Applications for the Parish can be accessed on the B&DBC website:
www.basingstoke.gov.uk/planning or by contacting the Parish Council Clerk ☎ 01264 738 039

TO RENT - LYE COTTAGE, BINLEY

A newly built three bedroom house in Binley is available to rent to a family with two children and strong connections to St. Mary Bourne and neighbouring hamlets. The rent will be at Social Housing levels and Local Connection, Occupational and Financial Social Housing conditions will apply.

The house has a fitted cooker, low cost underfloor heating, generous garden with shed and adequate parking.

An Assured Shorthold Tenancy will be offered for one year with the intention of an extension for a longer period.

Apply in writing to Mark Maclay, Lye Wood, Binley, Andover, SP11 6HA or mark.maclay@sladengreen.co.uk.

Esseborne Manor Hotel & Restaurant

Family run business offering a warm welcome and the best food in the area.

Daily lunches with canapes & wine

A la carte dinners

7-course tasting dinners

Sunday lunches

Vintage afternoon teas

Perfect for private functions & weddings

Hurstbourne Tarrant SP11 0ER,
www.esseborne-manor.co.uk, 01264 736 444



"Snowdrops"

5* Bed and Breakfast
- a haven of
tranquillity in Stoke

Beautiful gardens,
home-made preserves
and afternoon tea in
the Swedish Log Cabin

Ring 01264 **738920** to book
your accommodation or email:

gardenend@btinternet.com



G&S Lark Tree Services

Andover (01264) 874 464

Amesbury (01980) 670 226

Mobile 07850 849 960



Tree Care ~ Firewood ~ Hedge cutting

graemelark@outlook.com
www.larktreeservices.co.uk

TW GLAZING & WINDOW REPAIRS

01264 782 211/ 077 652 60922

www.twglazingandwindowrepairs.com

misted double-glazed units
cat-flaps into UPVC and glass
glass repairs into all existing frames
hinges, handles, locks and gaskets
greenhouse glass and faceputtying
FREE QUOTES AND ADVICE

MARH
fuels



Oil



Gas



Coal

01635 253253

AS WAITE & SON LLP

PLUMBING & HEATING ENGINEERS

- Heating Systems
- Bathroom design & installation
- Unvented pressurised systems
- Underfloor heating
- Oil boiler specialists;
service, maintenance &
installation

Whitchurch (01256) 893845
Darrell Mobile: 07884 481490
Tony Mobile: 07831 366188

GILL RHODES WEALTH MANAGEMENT

WEALTH MANAGEMENT CONSULTANTS



A wealth of expertise on your doorstep

We provide an experienced wealth management service
and offer specialist advice in a wide range of areas including:

- Investment planning
- Retirement planning
- Inheritance Tax planning

For further details contact Gill Rhodes on:

Tel: 01264 362282

Email: gill.rhodes@sjpp.co.uk
Website: www.gillrhodeswm.co.uk

Are you mulching
your garden
this year?

Apsley Farms Mulch Soil Improver

01264 554433 -
www.apsleyfarms.co.uk

Free local delivery - From £50 per 730L bulk bag



Thinking of a postal vote on 6th May?



If you're thinking of voting by post in the Hampshire County Council (HCC) elections on 6th May, make sure you apply early to ensure you receive your postal vote as soon as the election candidates are confirmed. To apply, download the form from the

Electoral Commission. You can also vote by proxy or in person - polling stations will be safe places to vote. See HCC elections webpages for more information about how to apply for a postal or proxy vote, registering to vote, and COVID-safe voting.

St Mary Bourne Village Centre News



Following the government's road map we are still only able to open for a very small number of activities. It will

not be until step 3 (expected 17th May at the earliest) that we will be available to open up for many of our usual functions and activities. This makes it difficult for us to confirm bookings but we can pencil them in pending restrictions to lift.

Assuming we do move to step 2 on 12th April as anticipated, we are pleased to announce that our Saturday morning community library will re-open on Saturday 17th April between 10.30am and 12.30pm.

We look forward to welcoming you back soon.

SMB
ST MARY BOURNE VILLAGE SHOP
& post office

Assistant Shop Manager

St Mary Bourne Village Shop and Post Office is looking for an Assistant Shop Manager to help run this busy and vibrant community hub and help plan and develop its bright future.

The part time post requires a minimum of 15 hours per week with possibility to extend these hours later in the year.

The successful candidate will have fantastic organisational skills, be computer literate, have a warm and friendly character, great attention to detail and be able to work as part of a team. Retail or Post Office experience is desirable but not essential. Experience in catering including Food Safety also desirable. All training will be given.

For more information on the role please email Lara at shop@stmarybourne.org

Applications must be made in writing along with accompanying CV to the same address by 9th April.

Interviews will take place week commencing 12th April.

Great opportunity to work within this amazing community and be part of an exciting new stage in the shop's life.

Star Gazing Highlights in April

12 April - New Moon - the moon will be located on the same side of the Earth as the Sun and will not be visible in the night sky. Best time of the month to observe faint objects such as galaxies and star clusters as no moonlight to interfere.



22-23 April - Lyrids Meteor Shower - the Lyrids is an average shower usually approx. 20 meteors per hour at its peak. It is produced by dust particles left behind by comet C/1861 G1 Thatcher, discovered in 1861. Shower runs from 16-25. April. These meteors can produce bright dust trails lasting several seconds. Best viewing after midnight. Meteors radiate from constellation Lyra but can appear anywhere in the sky.

26-27 April - Super Moon - first of the 3 Supermoons this year. The moon will be located on the opposite side of the Earth as the Sun and its face will be fully illuminated. Known as the Pink Moon by early Native American tribes, as it marked the appearance of the moss pink wild ground phlox, one of the first spring flowers.

Clear skies are ideal for enjoying observing dark night skies in our rural location. Please try to minimise light pollution by reducing outdoor lighting. This benefits wildlife, environment and humans alike. Remember to wrap up warm when Star Gazing. Make a flask, allow 15 minutes for eyes to adjust to the dark, use a recliner and enjoy these free shows.

ROYAL OBSERVATORY GREENWICH -FREE Virtual Planetarium - plus wide-ranging topics for all ages. Why not have a look online?



*The Community Library - Club Room
Saturday mornings between 10.30 and 12.30
from 17th April*





Country Oak Buildings

Specialising in:
Hand Made Oak Buildings
Garden Structures and Follies
Traditional Carpentry Techniques

Contact Nick 01962 776 217

Mobile 07919 987451

www.countryoakbuildings.co.uk

Our Treatments

McTimoney Chiropractic
Physiotherapy
Podiatry
Sports therapy
Nutrition and allergies
Bowen technique
Alexander technique
Counselling



01264 324924

36 East Street, Andover, SP10 1ES
www.chirosclinic.com



CLOCK BARN.

Beautiful barn weddings

Clock Barn, Tufton Warren, Whitchurch, Hampshire, RG28 7RB

01256 630199 clockbarn-weddings.co.uk



Images by Mia Hooper Photography, Jacob & Pauline Photography and Kit Myers Photography

Tried - Tested - Trusted

We only offer the best advice and a no-pressure sales calls

KJM



Building quality since 1983...Triple Glazing Specialists



Windows, Doors, Conservatories in Hardwood, PVC and Aluminium

Mylen Business Centre, Mylen Road, Andover SP10 3HR

Tel 01264 359355 I Fax 01264 353441 I e-mail: sales@kjmgroupp.co.uk



www.kjmgroupp.co.uk - 4 x Finalists "Installer of the Year" G-Awards



Light Touch

Learn to Love your Worms

Upon this handful of soil our survival depends. Husband it and it will grow our food, our fuel, and our shelter and surround us with beauty. Abuse it and the soil will collapse and die, taking humanity with it

Ancient Sanskrit Scripture (1500BC)

There are ten species and three main types of worm in Britain and they have their very own British appreciation society. Each type has its own unique job to do to keep our soil healthy and they are named (in Greek) according to their place in the soil. First there are the speedy little dark wriggly red headed ones (for the scientifically minded Epigeic) These are roughly matchstick size and live in compost heaps, under plant pots and in leaf litter on the surface of the soil without burrows. Then there are the podgy pale or greenish ones which often curl up if handled (endogeic) and eat soil while making horizontal networks of burrows in the top layers of the soil. Lastly, we have the big dark red or black headed worms roughly pencil sized (Anecic) who make permanent unbranched burrows straight down for about 2 metres (as tall as us!) These are the ones who produce worm casts and sometimes leave piles of half chewed leaves round their burrows. They lurk vertically to emerge at night to feed around the mouth of their burrows.



Earthworms are essential for our survival because they enable plants to flourish. With only artificial fertilisers soil eventually "dies". Worms are vital for mixing the mineral and organic components in our soils as they drag plant matter down.

They also aerate and drain the soil, and the big deep worms even help trees establish roots using their burrows. Some species of worms eat plant killing nematodes. And last, but not least, the mucous they excrete (yuk) to enable their movement through the soil feeds the soil's beneficial microorganisms; the sort of stuff one buys in an expensive packet from the garden centre.



How we can help them:

Worms hate being dug up as it ruins their burrow systems and exposes them to predation, so deep digging vegetable patches is no longer recommended. They go hungry if we tidy up all the leaves and use only artificial fertilisers, so start a compost heap, spreading it liberally on flower beds as a mulch in spring and let some leaves stay on the lawn to overwinter. Farmers are increasingly doing less ploughing and more manuring. Worms love to eat broken eggshells so use them to deter slugs and leave them to rot down for the worms. Use a mulching lawn mower if you must mow and keep your grass as long as the mower will allow. Avoid pesticides, fungicides and chemical lawn treatments which kill worms as well as everything else. Try not to compact soil when waterlogged by walking or driving on it as this kills the worms by squashing their burrows and on a large-scale increases flooding.

Don't buy worms to improve starved soil they will die; keep feeding the soil and worms will arrive!



Postcard from Binley April 2021

We are blessed with some lovely walks here in Binley. Within yards of my back gate I can be up on the cattle drove crossing the downs to Gangbridge, or heading across the fields to Wadwick where I can then plough on to Egbury or turn left and follow the track to Woodcott church as so many God fearing Wadwickians will have done over the centuries. If the fancy takes me I can drop down to Sladen Green and meander down the lane then across open countryside studded with woodland to Crux Easton where, I am reliably informed by a lifetime Binley resident a headless horseman was often seen by drinkers heading home to Binley from the Three Legged Cross public house! Never spotted going there, just coming back! That tickled me.

There's a change in the air now. Sweeter, warmer and several times recently I've caught the scent of fresh mowed grass. Doesn't it make you feel hopeful? After this wicked last year, I am feeling optimistic for the future and why not? By the time you read this the Binley daffs will be in full swing and our first lambs will be imminent. Although that's not exactly true as back in the autumn of last year an adolescent ram paid an unauthorised visit to some of his mother's friends and eight new lambs arrived on the downs at the end of January right in the middle of that very cold spell. I'm pleased to say they all survived the experience and are looking in fine fettle.

One of my early walks takes me past a rather grand house and if I get my timing right the kitchen will be illuminated and a very smart chap in dark waistcoat, crisp white shirt and tie will be squeezing oranges, brewing coffee and attending to the pans on the Aga. As I stand and gape, up to my ankles in mud with rain dripping off the end of my nose I picture a groaning sideboard and silver domed platters with eggs done all ways, bacon, sausage, kidneys...you get the picture? If you think I'm sitting down to a bowl of Bran Flakes after that you are very much mistaken, and a cooked English breakfast is the order of the day! Is there anything finer? Particularly one that is cooked *for* you rather than *by* you. I think in all honesty, like Billy Bones in *Treasure Island* I could live on bacon and eggs. You can eat them at any time of the day, but I'll take mine with hot sweet builder's tea and pass on the rum! Lord knows why but I am toying with the idea of keeping chickens again. Last time was an absolute disaster though so what's produced this line of thought I really don't know? But when you are an old townie like me and first move to the country there is a desperate need to fit in, don't you think? Dressing in threadbare clothing, not shaving at weekends, spending a King's ransom on a clapped-out Land Rover will only get you so far. What you need, my old fruit is chickens! But to cut a long story short it all ended in tears culminating in my wife being attacked by an enormous cockerel as she returned home from shopping one day with only a baguette to defend herself. There's nothing quite so delicious as watching the love of your life go into battle against a giant chicken armed only with a loaf of bread, so after indulging myself for a few moments I eventually rushed to her aid. But it was curtains for the chickens after that.

I was delighted to see Hurstbourne Tarrant finally get her 15 minutes of fame and all down to a rather innocuous telephone box! I know one or two residents were a bit sniffy

about it but the old Phineas T Barnum adage that "any publicity is good publicity" surely rings true here?

St Mary Bourne of course has always cultivated a racier image since Mandy Rice-Davies and Christine Keeler used it as a bolt hole and played liar dice in The George as the biggest scandal to hit British society for 100 years was unravelling the Government. Even dear little Binley played host to various "B list" tv and film celebrities and their mistresses when the actor Jack Hedley owned my house and if there had been such a thing as camera phones in those days the Hurdlers Arms would have featured in the News of the World each week. So, I'm glad things have evened up a bit. Jack Hedley, who memorably played the British Commanding Officer in the TV series Colditz eventually stopped coming into the pub as each time he walked through the door some wag would pipe up "You escaped again?" He had a sense of humour failure over that.

Once a month as a child I would accompany my father and visit my Gran in her little house in Stepney. We would spend an hour listening to her ailments, she always seemed to be suffering with "the screws", whatever *they* were and then if the weather was fine we would walk up Whitechapel Road to Tubby Isaacs shellfish stall for my dad's monthly fix of jellied eels and then back down to "The Grave Maurice", a pub my father frequented for "just the one". It was a beautiful old building, a classic London pub with etched glass and polished brass and mahogany. Children were not allowed in pubs in those days so a chair was put outside and I would sit with a lemonade and a packet of crisps and endure the cockney badinage of passersby. There were two old crones who sat just inside the door to the right and if the weather turned, I was permitted to sneak under their table and hide under their skirts and coats. "Through the teeth and round the gums, look out tummy, here it comes!" they'd sing as they got sozzled on port and lemon. On one occasion they passed me down a half pint of Guinness. I cannot tell you how good that tasted, and it started a love affair with pubs and the contents therein that continues to this day. And I mention all this because I await with some excitement the grand opening of The George and the sweet anticipation of standing at the bar and uttering the immortal words "Pint of best please, and a packet of nuts!" At a time when so many communities are losing their pubs isn't it wonderful that Chris and Simon have come along to breathe new life into the place. We must consider ourselves lucky and I hope everyone does what they can to support it and all the community businesses we have here. I will certainly be giving it a good go!

NA



Obituary

Tony Grunsell

23rd September 1961 - 12th February 2021

Anthony (Tony) Peter Grunsell was born in Winchester on 23rd September 1961. He was the only child of Sybil and Ron Grunsell. Tony spent a blissful childhood as a true son of the village, much loved by his parents and other relations as he came from a long-established line of villagers on both sides of his family.

He went to the village school and then to Testbourne where he developed his great love for cricket, playing as a wicket keeper for the school and for the village team. Sport was a passion for him all his life, both as a player and as a supporter, and he enjoyed sharing this enthusiasm with others, going to Lords & the Rosebowl for cricket matches, Southampton games at The Dell and St Mary's, attending local race meetings and hosting an annual Bowls match in memory of his father on the St Mary Bourne Bowling Green.

Tony started working for Londis as a "Saturday boy" when he was still at school. He spent his entire working career with the firm, working his way up to the top as General Manager of the depot. He was loved and respected at work where he nurtured a family atmosphere and his people skills were legendary.



Tony met Sandra Sutcliffe when her parents were running The George Inn. After a whirlwind courtship they married in August 1984 and their sons Daniel and Richard were born in 1986 and 1988. Family meant everything to Tony. He brought his mother to live with them after the early death of his father and he continued to care for his

elderly relations. He was so proud of Sandra and his boys and he loved having family celebrations with all the generations together. Tony was diagnosed with melanoma in 2014 but he took the treatment in his stride and resolved to enjoy life for as long as he could. Fortunately, he was able to meet Richard's son Jensen just before he died, and he treasured seeing his grandchildren together.

The local community also played a big part in Tony's life. He generously gave his time, strength and financial support to village organisations and charitable events. He served for over 12 years on the Parish Council where his detailed local knowledge was invaluable. Tony was loyal and dependable and could always be relied on to help when needed.

Hundreds of people gathered in the Summerhaugh square, lined the village roads and filled the surroundings around the Londis depot as Tony's funeral cortege passed on 12th March. They came to pay tribute to a big man with a very big heart. He was a generous, gentle giant. A legend in his local community. Tony will be much missed by many people but especially by his family who were so very dear to him.

Sandra and the family would like to thank everyone for all the cards, thoughts and prayers they have received and also those who gathered to line the route as his funeral cortege passed through St Mary Bourne. It has been a great comfort to them at this sad time to know how much Tony was loved and respected.

Report from St Mary Bourne Horticultural Society Zoom AGM - 5th March 2021

Jeremy Barks (Chair) reported that although the Flower Show & Fête was cancelled due to Covid restrictions, the committee had developed an online show website with competitions. The Makgills had run a scarecrow competition on a "Super Heroes" theme which attracted 28 participants and created a carnival atmosphere throughout the parish. They had also organised a Treasure Hunt. The committee was extremely grateful to Vitacress for their sponsorship of £2,000 which was used to develop the website instead of paying for a show marquee.

The Royal Horticultural Society had suggested their annual Banksian medal should be awarded to a deserving supporter of the Show. The committee had unanimously decided that this should go to Bat Redfern for her splendid work over the past 14 years in producing the show programme and generating over £20,000 in advertising revenue. Jeremy also thanked Bat Redfern, Abby Millar & Sky Ralph (2020 programme preparation & advertiser record keeping), Sheila Marsh (admin and membership secretary), Rosie Case & Jan Atkinson (online entries and judge liaison), Mike Strong (treasurer), Oliver Madge & team (website), Makgills (Scarecrows & Treasure Hunt), and John Banbury & Rob de Segundo (pre-show planning and preparation). In conclusion he thanked the Hort Soc President Peter St Quintin and all the committee members for their support. Tribute and thanks were given to retiring committee members Bat Redfern and Rosie Case who had both given many years of dedicated service to the Show.



Mike Strong (Treasurer) reported that the 2020 receipts amounted to £1,075 - a mixture of membership subscriptions and advertising revenue, some of which had been donated and some held over for 2021. There had been a reduced distribution to local charities of £2,400 which left £4,400 in the Society's reserve funds.

The proposed date for the 2021 Show is Saturday 24th July. It was hoped that government Covid restrictions would have eased by then and preparations for the show would go ahead shortly.




<u>SHOTGUN CARTRIDGES</u>	<u>FIREWOOD</u>
<ul style="list-style-type: none"> Rio Gamebore Clay Pigeons Traps 	<ul style="list-style-type: none"> Seasoned Logs Free delivery 10 miles of RG28 7QA

Danegrove Trading, Lower Woodcott Farm, RG28 7QA

Tel: 01635 250518

Email: pamela.nicholson@danegrove.com



**The Oak Tree
Nursery School**

Rural nursery in Whitchurch for children 3 m to 5 yrs, including:

- Forest school
- French lessons
- Healthy home-cooking
- Graduate-led curriculum

www.theoaktreenursery.com
Tel: 01256 895577

Doug Hopkins

~ Joinery ~

Purpose made joinery and cabinet making to your specifications

Tel: 01264 736 705 (Stoke)
 Mob: 07857 692 445





Jason Cousins Hair Salon


Come and visit our award winning Salon for a free consultation and excellent customer service.

10c Colenzo Drive
 Andover Hampshire
 SP10 1JS

Follow Us 

www.jasoncousinshairsalon.co.uk 01264 356011

PAUL MITCHELL
TANGLE TEEZER
ghd
AFFINAGE



HOME ELECTRIC SOLUTIONS

Professional Domestic Electrician

Reliable Professional Affordable

For all your electrical needs

From plug sockets and light fittings to complete rewires and everything in between

No job is too big or too small so please get in touch.


tel: 07816900083
 email: info@homeelectricsolutions.co.uk
www.homeelectricsolutions.co.uk



Trust in Godwins to deliver



12 St Thomas Street, Winchester, Hampshire SO23 9HF
 01962 841484 | info@godwins-law.co.uk
godwins-law.co.uk



Yew Cottage Bed & Breakfast



Rosie and Martin Lowry

*Cosy 17th Century
Cottage accommodation
With Annex
in a beautiful village
on the River Test*

*Longparish, Andover,
Hampshire Sp11 6QE*

Telephone 01264 720325
www.yewcottageandover.com

LONGPARISH PARISH COUNCIL

REPORT FROM MEETING HELD REMOTELY ON 8 MARCH

Planning

The Parish Council had **no objection** to:

- Erection of building to house swimming pool plant and provide a store and changing area at **Longparish House**
- Tree works at **The Plough Inn**

In response to a request from TVBC to determine if prior approval is required for the conversion of 2 agricultural buildings to a single residential dwelling at **Watercress Beds, Nun's Walk**, the Parish Council requested TVBC to consider this proposal as a full planning application, and not under Class Q General Permitted Development rights.

Annual Parish Meeting

The Annual Parish Meeting is scheduled to take place on **Tuesday 20 April at 7.00pm**. This will be a remote meeting held via Zoom, and those wishing to attend, should contact the council for the link to the meeting. The Parish Meeting is a good opportunity to hear a summary of Parish Council actions and details of PC finances for the previous year, as well as hearing from local groups and organisations.

Stream Verge B3048

For some considerable time, the Parish Council has been making enquiries into having repairs made to the stream bank running alongside the B3048 in Longparish. Engineers from HCC recently visited Longparish to look at the eroded parts of the bank, and have advised the PC that they will contact us once they have established what the next steps should be.

Visiting the Playground

The newly refurbished playground has become a very popular destination, and cars parked in the vicinity of the playground have raised concerns. We would urge all playground users to walk to the playground wherever possible. The spinal path runs across the football field from the Village Hall car park, near the school, all the way to the playground. Please do not park in front of the allotments – this obstructs access to the allotments and to the adjacent fields. Cars can be parked along the straight stretch of road next to the playground, but please do not obstruct the entrance to the playground, or park anywhere near the blind corner. Vehicles should also not park on both sides of the road in this area. This limits visibility for other drivers. If you notice dangerous parking, please let the PC know the date and time so that we can build up a picture of the busy times and come up with a better way to manage this.

Village Hall car park drainage repairs

The repairs to the car park have now been completed, and the car park was re-opened in good time for children returning to school on 8th March. The Parish Council is pleased to report that the repairs came in under budget, and the Council will consider reallocation of remaining funds at a future meeting.

Spring Clean Up Day

The date of the next Clean-Up Day is **Saturday 24 April**. Tasks will be co-ordinated by James Hillier, and volunteers wishing to participate should get in touch.

Parish Council Meetings

Until further guidance is received from HALC, the Parish Council will continue to meet remotely via Zoom. Members of the public wishing to “attend” any meetings should contact the Clerk or the Chairman.

The next Parish Council Meeting will be held at 8.00pm on Tuesday 20 April. Parish Council Meetings are public, and parishioners are also welcome to speak on specific agenda items by prior arrangement with the Chairman - Christian Dryden (Tel 720398, or email christian.drydenpc@longparish.org.uk)

Minutes of previous meetings are available on the current or archived Longparish website www.longparish.org.uk



Longparish Village Hall

The Village Hall AGM will be on Wed 28 April at 7.30pm via Zoom. All are welcome. Please contact mrjeremybarber@gmail.com for the link.

If all goes according to plan, we expect to re-open the hall on 17 May, with restrictions on numbers and activities permitted and to be fully open from 21 June. More details will be in next month's issue.

Count on Us Bookkeeping Ltd

Bookkeeping and Accountancy Support

07879 475005

www.coubookkeeping.uk

kath@coubookkeeping.uk



- * Confused by debits and credits?
- * Swamped with paperwork?
- * Fed up with VAT returns and other business forms?
- * Concerned about cashflow?

Then call us to talk to a friendly professional who can help give you back your time. And your sanity!

Monthly, fixed-fee packages available.
For a friendly and affordable service,
phone now for a FREE first meeting



Practice Licence: 11809

WILD ROSE

FLORAL DESIGN

Wild Rose Floral Design will look after your floral needs, weddings, sympathy, events, corporate or a beautiful bouquet delivered to your door, let us inspire you and take you on a floral journey.

07894 103953

laura@wildrosefloraldesign.co.uk

www.wildrosefloraldesign.co.uk

BURLISON Photography

MPA Photographer of the Year 2019/2020



CAA Authorised & Insured Aerial Photography & Film.
Family portraiture at home or on location.

- Wedding Photography & Film
- Instant Event Photography • Award Ceremonies, Fun Days • Golf Days • Summer Balls
- Prom Nights • Xmas Parties • Celebrations
- Commercial • Corporate • PR • Interior • Food & Drink • Lifestyle Photography
- Image Restoration • Bring the memories back to life

Contact Dave on
07771 803025



www.burlisonphotography.com



info@burlisonphotography.com



James Barnett

Quality Painting & Decorating



Advanced City & Guilds
Over 25 Years Experience
Tel: 01264394543
Mobile: 07747603710

Email: Jamesbarnett1@btinternet.com



I SEE A LINE. I CROSS IT.

BESPOKE TAILORING BY DRESS2KILL.COM

£100 off your first **DRESS 2 KILL**
Bespoke Suit



Exclusive offer for readers
of The Hill & Valley Magazine

Dress 2 Kill now at 84 High St, Andover SP10 1NE Above At Last

OVERTON

BATHROOM CENTRE LTD

4 HIGH STREET. OVERTON. HANTS. RG25 3HA

TEL: 01256 770374 FAX: 01256 771688

www.overtonbathrooms.co.uk

EXTENSIVE BATHROOM DISPLAYS
FOR ALL YOUR PLUMBING, HEATING
AND BATHROOM REQUIREMENTS

DESIGN & INSTALLATION SERVICES AVAILABLE



FRIDAY LUNCH CLUB

Planning for the first one of 2021
to be on 21st May in the Village Hall,
if Covid Regulations allow.

Christian and Andrea

LITTER PICKING REWARDS

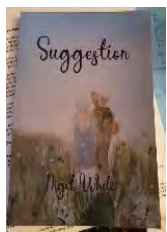
Thank you to everyone who helps keep Longparish beautiful by picking up litter.

Latest story from one of our regular litter pickers who has adopted the A303 flyover.

"I was picking away near the bridge today when a large breakdown truck drove past me, then stopped a few yards further on.

After watching me for a minute or two a bloke jumped out carrying a small Costa bag.

I assumed he was either lost and going to ask for directions or going to hand me some litter for my "collection".



To my surprise he said "I wanted to thank you for what you're doing. I know how much time it takes because I collect litter in my village. I'm a novelist - here's a copy of my latest book". He handed me the Costa bag, jumped back in his truck and drove away.

Above is a picture of the front cover. It looks self-published and from the blurb on the back, perhaps a little racy...



Why not join the band of regular litter pickers in Longparish by adopting a road or footpath. Who knows what you will find or what you will be given?

The Parish Council can provide litter picking sticks, hoops and bags.

Tel Christian Dryden 720

398

LONGPARISH

Parish Council

St Nicholas Church

LONGPARISH

Longparish Community Support Group

Lifts can be arranged to the vaccination centres if needed.

Please call 07765 467 006 or email

covidhelp@longparish.org.uk

Some other useful numbers :

Longparish Support Fund – The purpose of the fund is to provide financial help to individuals or families whose income has been adversely affected by the Covid-19 outbreak.

Call 01264 720215 or email

stnicholaslongparish@btinternet.com

Age Concern Village Agent – for all enquiries about support available.

Email villageagent@ageconcernhampshire.org.uk

Tel 07593 439018

Barton Stacey WI

Over the last few months we have managed to hold meetings via Zoom, which has served us well. There have been good speakers and a chance to chat over the internet.

At the April meeting, we will be launching the new programme for 2021/22 with a talk focusing on Cyber Security, which has been quite a problem over the lockdown period especially.

This talk will be on 22 April and we would welcome anyone who is interested in the WI and maybe would like to join.

The programme includes talks on Homeopathy to hearing from a BBC Correspondent, Hit the Road Jac - Granny on a Bike - and her seven years and twenty countries on a motorbike. At some time we hope we will be moving back into the Village Hall but for the time being we are Zooming from home.

Meetings are on the last Thursday of the month at 7.30 but if you would like more information, please contact bartonstaceysec@hampshirewi.org.uk



GroundLord

THE PROFESSIONAL
ARBORISTS YOU CAN TRUST

TREE SURGERY | SITE CLEARANCE
ECOLOGY WORKS | FORESTRY

01256 212908
www.groundlord.com



TUCKER

Kitchens, Furniture & Joinery

Est: 1976

Unit 9 Towergate Industrial Park
Colebrook Way, Andover, Hants, SP10 3BB
t: 01264 365113 www.tuckerjoinery.co.uk



SW WINDOWS

Window Cleaning



Interior & exterior windows
Gutters, fascias & soffits
Conservatory roofs
Solar panels
Cladding

07968 524874
swwindowstrm@gmail.com

CLEAN OVENS

DOMESTICS LTD

• AGAS • HOBS • OVENS • RANGES
• EXTRACTORS • BBQS • MICROWAVES

*Eco-friendly materials used - Experienced staff
Covering Hampshire & Wiltshire*

Call or email Dave
tel: 0800 707 6629 mob: 07563 693145
email: cleanovensdomestic@gmail.com

M.J. SLY

MONUMENTAL SCULPTOR

Andover Memorial Studio
6 Swan Court,
Andover, Hampshire.
SP10 1EZ
Open by appointment only

QUALITY MEMORIALS AT
WORKSHOP PRICES FREE
BROCHURE

Choose a NAMM Member
www.mjsly.co.uk

email: info@mjsly.co.uk

Telephone 01672 516797
Pelham Court, Malborough



Mobile knife, scissor & tool sharpening services

No call out charge

Call Becky on **07393 600630** to book a visit
More details can be found on

www.onpoint-sharpening.co.uk

To Advertise in this Magazine contact: Mr Michael Widén 01264 738250



Longparish CE Primary School

On Monday 8th March, all the children returned to school, thankfully safe and well after such a harrowing time. We want to thank all the parents for their patience, support and thoughtfulness during the pandemic - you have seen us through the days with huge cakes, biscuits and kind, uplifting messages.

During the lockdown experience some of the children have grown up, some even taller! They have settled well back into the school routine and we have launched into some amazing topics on the run up to Easter.

Our children learn very early on the values of kindness, compassion and consideration to ensure our future adults of Longparish are good, unselfish and thoughtful citizens. I've heard it said: "You can always tell a Longparish child, because they are so well behaved and thoughtful".

Our children are the best in the world.... I blame the parents!! How lucky we are to have a school in this amazing village surrounded by natural beauty and the richness of people's generosity and care. Jesus said "Love one another as I have loved you". A tall task, often done by Longparish neighbours!

I have every confidence in Mrs Nicky White, the new Head teacher and the school team, as they continue to bring light, love and learning to the village in abundance. Thank you for the past three and a half years - the happiest of my career. Thank you for your love, care and kindness. I shall never forget it. Wishing you all the very best for now and in the future. God Bless you and Happy Easter!

Trudie Cawthra
Head teacher 2017- 2021

FoLS 100 Club Winners

- 1st - Sid Bryant
- 2nd - Rachel Waite
- 3rd - Jeanette Branfoot



A big heartfelt 'thank you and farewell' to Mrs. Cawthra!



Mrs Trudie Cawthra, Headteacher of Longparish Primary School, is retiring at the end of the Easter term, marking the end of a fantastic 39 year career in education. For the last four years, we have been lucky to benefit from her vast experience at Longparish Primary School.

As well as her wealth of experience, Mrs Cawthra brought her warmth, kindness, sense of fun, and infectious energy to the school, all of which have rubbed off on the many children who have come through the doors. It was not unusual to see Mrs Cawthra dressed as a bear or a fox at drop off!

More recently, she has held the fort during the incredibly challenging (but hopefully soon-to-end) pandemic, leading acts of worship from home and trying to ensure our children continue to thrive.

Mrs Cawthra, thank you for everything and may you have a happy and healthy retirement!

The Governing Body,
on behalf of the whole school community



Longparish Little School

We are now starting to offer viewings for you to look around Little School if you would like a place from September onwards. These viewings will be at 3.30pm after the children have gone home during these Covid times. If you would like to book a viewing please call 01264 720455 or email claire@longparishlittleschool.org.uk

For more information our website is <https://www.longparishlittleschool.org.uk/> OR <https://www.facebook.com/longparishplaygroup>

What have we been up to? We have had some new pets at Little School, have watched our frogspawn turn into tadpoles and we are now waiting to see when they grow legs and turn into froglets. We've had two sparrows make a nest in our bird



box with a camera in. We are hoping they will lay some eggs soon. We found lots of things we thought birds might use and created some great nests.

Claire Nash

G & R Cousins

BUILDING SERVICES

TILING • CARPENTRY • BRICKWORK

EXTENSIONS • RENOVATIONS



PAVING • PLASTERING • WINDOWS

GARAGE CONVERSIONS • NEW BUILDS KITCHENS • BATHROOMS • PLUMBING • ELECTRICAL

- Established over 10 years -
• FULLY INSURED •

For a FREE estimate call
01264 860115
or Mobile: 07831 342599



LOCAL BUILDER SEMI-RETIRED

Small jobs around your Home

I have been in the building business (formerly Amport Construction Ltd) for over 40 years. Do you have jobs around your house that need doing?

Room Alterations • Garage Conversions • Plastering • Tiling
Brickwork • Rendering • Carpentry • Garden Walls and much more

No job too small. References available
Please contact me for a free quotation:

Ian Gaitskell

Tel: 01264 771280 Mobile: 07787 530991

Email: amportconstruction@gmail.com Web: www.amportconstruction.co.uk

Amport based



Ryan Dickinson
Contract Services Ltd



**HAVE
A HAPPY
BOILER**
ALL ROUND PROTECTION FROM
£14
A MONTH

Leave your central heating in our hands. No more expensive repair bills with parts and labour included in our cover. We provide yearly contracts for gas and oil boilers. Visit our website for more details.

Monthly Boiler Service Contracts

- ✓ Have a happy boiler with all round protection
- ✓ One off annual fee or easy monthly payments
- ✓ An engineer on site within 24 hours
- ✓ Parts and labour included
- ✓ No expensive repair bills
- ✓ Annual boiler service
- ✓ Total peace of mind

Showroom Open
Mon – Fri: 9am – 5pm

For more details
contact us by
telephoning
01256 895216 or
visiting our
showroom at
**No7 London Street
Whitchurch,
Hampshire
RG28 7LH**



Check out our website
www.ryandickinsonplumbing.co.uk



G G GOLD & GREY

Elegant English Interiors

Interior Design

Curtains & Blinds

Upholstery

Fine Fabrics & Wallpaper

Tel: 07795 247 142

Info@Gold&Grey.UK

Hurstbourne Tarrent

Sp11 0AS

WWW.GoldAndGrey.UK

Bourne Rose Beauty Sky Cousins

We offer a professional, fully qualified and dedicated client service in a full range of beauty treatments.

- Nails Waxing • Lashes & Brows • Facials
- Fake Bake Spray Tanning • Fake Bake Body Polish

Call us to see what we can offer you
07786931639



Fake Bake

LONGPARISH GARDENING CLUB

We are planning for the Summer in line with Government Guidelines and hoping to visit the venues we were expecting to visit last year as well as others. We will also be arranging some talks for the Autumn.

Current plans are to start on the normal Tuesday, 22nd May.

Keep gardening and hope we can all get together soon.

Any queries please send to: Rosie Lowry 01264 720325
rosie@yewcottagelongparish.com or Marion Bell 01264 720205

Jan Hunt : 25 November 1944 - 19 January 2021



Janet Barbara Lillywhite was born in Redhill and spent her childhood in Warlingham in Surrey. She married her husband David, in November 1960. They had four daughters, Carole, Frances, Patricia and Claire. Jan made beautiful cakes and they had all sorts of animals, dogs, rabbits, guinea pigs and a fox called Basil.

For most of her married life, Jan was a gamekeeper's wife, taking on all that that entailed including dog breeding. Jan and Dave had a shared love of racing pigeons and they won many trophies. After they went their own ways, she moved to Longparish and qualified as a District Nurse. She also worked as a Marie Curie Nurse before becoming the Deputy Manager and gained qualifications in later life to become a Further Education Tutor and Examiner in the Care Home sector.

She met her partner Lenny and enjoyed many new hobbies including crib and bingo and all types of music, especially country and western. Latterly, she organised trips to Highclere for the Battle Proms with a group of friends from Longparish and Wherwell. She became one of the leaders of the Recycled Teenagers in Longparish and events were always enlivened by her bubbly personality and sense of humour.

Sadly ill-health forced her to move to Whitchurch without her beloved dog, Peggy, but she quickly settled and was happy there. Jan was very proud of her family and absolutely doted on her seven grandchildren and four great grandsons. They will all miss her greatly and will cherish their memories of her.

BIRDS OF LONGPARISH

Chris Bowman

LINNET

I have two Linnets that visit my feeders every day. They are not known as a bird that usually will come to feeders. Roughly the size of a House Sparrow, but with a longer tail, brown back with pale buff-brown underneath, marked by white edges to the primaries and tail feathers, quite heavy streaked on back and underparts and paler throat markings.



In the breeding season, mid-April-early August, the male has a crimson fore-crown on a grey head, crimson chest and flank. The nest is low down in thick vegetation, bush, hedge or in a conifer plantation. It's made from a foundation of small twigs, roots, stalks and moss lined with hair, wool and feathers. Usually,

4-6 eggs are laid pale to white blue with distinct spots, speckles and streaks of pink, purple or palish brown (mostly at the larger end). They are incubated for 12-14 days and fledge in 10-17 days. The food on my feeders that they like is sunflower hearts but in the wild they eat medium seeds. In the winter they gather in large flocks with other seed eaters eating "weed seeds".

Well, Spring is nearly here, and I have seen Blackbirds and a Robin all with beaks full of worms. It won't be long before a brood of Mallards are about!



LONGPARISH CRICKET CLUB



Longparish Cricket Club are delighted to announce that their grant application to TVBC, to fund 50% of the cost to fully replace the clubs practice nets, has been approved. The club can now replace the old nets, with a brand-new system, built to the required current standards and specifications.

A full cricket season is expected to be possible. The Club runs teams at U11, U13 and U15 age groups, who compete in the local junior cricket leagues and is always happy to welcome new junior players, with no prior experience needed. We organise weekly junior coaching sessions for Year 4 (age 9 or 10) with fully qualified ECB coaches. It is intended that Junior practice will start after Easter, in preparation for matches which will begin in May. The club will continue to run three senior teams playing league cricket on Saturdays, as well as midweek 20:20 team and Sunday team. New senior members are also most welcome.

Please contact the **Junior Coordinator, Justin Jackman**, (jackmanjustin@aol.com) for further details of membership at junior and senior levels. For more information visit: <https://longparishcc.hitscricket.com>

Mark Benzing, Chairman and Treasurer

CLACY'S GARAGE

London Street, Whitchurch
01256 892099 or 892168
Email wayne.clacys@hotmail.co.uk
Service and Repairs to All Cars
& Light Commercials

Both Diesel and Petrol
Welding and Bodywork



**BREAKDOWN &
ACCIDENT
RECOVERY
CAR HIRE AND LOAN**

Cars & Light Commercials & Motorbikes -
Diesels, Petrol & Catalysts Tested

Matt Townsend Landscaping and Fencing

Call 07825710750

*Over 15 years' experience
Fully Qualified and Insured*

www.matttownsendlandscapingandfencing.com

Landscaping
Fencing
Patios
Turving
Decking
Concrete Bases

BARSU GrassWorks

Garden Maintenance

Grass Cutting
Lawn Treatment
Small Hedge Cutting

For Competitive Rates call

Barry

☎ **01264 393803**

Mobile: 07876 178865

or email:

barsu79@ntlworld.com



MOSAÏQUE
EASTFIELD HOUSE

BOOK ONLINE NOW, visit:
www.mosaiquebeauty.com



Relax in beautiful Longparish!

Mosaïque Beauty & Image

Eastfield House,
Forton, Longparish
SP11 6NN

T: 01264 720 797

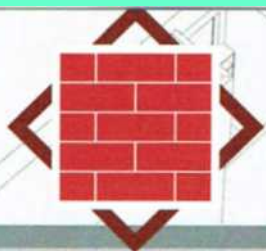
M: 07785 268 186

E: bp@mosaiquebeauty.com

W: www.mosaiquebeauty.com

Treatments Include:

- Organic & Specialist Facials
- Eye treatments
- Manicure & Pedicure
- Gel Polish
- Lycon Gentle Precision Waxing
- Spa Treatments & Lava Shells
- The Dorn Method
- Jane Iredale Mineral Make-up
- Colour & Style Analysis



Hayward Brick and Flint

Restoration, Alterations, New build

Adrian Hayward

Bricklaying And Flintwork Contractor

Groundworks, Fencing,
Patios, Chimney Rebuild
Landscaping, Drives
Drainage, Damp proofing,

10 Hirst Copse
St Mary Bourne
Andover
SP11 6ST

tel 07833691542
jinxzoolander@hotmail.co.uk



RIBA
Chartered Practice

MATHEWSON WATERS ARCHITECTS

WHITCHURCH 07540 726562 www.mw-architects.co.uk



LONGPARISH COVID-19 VACCINATION HEROES

With the welcome arrival of Covid vaccines at the end of last year the country went into high gear setting up vaccination centres across the UK. Several members of our community stepped up to help with this mammoth 'war effort' and so have contributed to a very successful national vaccination programme assisted by an army of volunteers, many from the village and surrounding areas.

"The North Hampshire Covid Vaccination Programme (CVP) based at the Hampshire Court Hotel is a GP-led vaccination centre in Basingstoke, covering much of the North Hampshire area from Tadley down to Alton. It is charged with the vaccination of patients from all 15 GP practices within the programme, amounting to around 250,000 people in total.

We have been up and running for over 2 months using both the Pfizer and Oxford/AZ vaccines and are now at our full capacity of around 1,100 vaccines per day 7 days a week. We recently reached our 50,000th dose of vaccine administered at the centre and are fast approaching 60,000 at time of going to print.



Across the site we have 800 volunteers and staff, involved in a multitude of different jobs including call centre, IT, operations, car parking, patient liaison, vaccinator support, vaccinators and pharmacy dispensary. Everyone's role is important, and we really value our volunteers as all the medical team needs to worry about is sticking needles in arms!

Thank you to all the wonderful Longparish residents who have volunteered; you know who you are, and your assistance is most appreciated. We are always keen to hear from anyone else who would like to get involved (liz@training-expertise.co.uk). We certainly can't always promise a role for everyone, but very happy to take details!

Liz Mayon-White, Operational Lead

LONGPARISH OF OLD**A Fisherman Hooked**

A tale of a wily local river keeper with an eye to a profit has come to light in a rediscovered issue of the Fishing Gazette of **April 1892**. The author, a Major Turle, relates how a new tenant of Middleton House was surveying his beats along The Test when he came across the keeper of a neighbouring stretch of river and enquired if many poachers were about.

"A smart few" replied the keeper. "Only the other night I had a bit of a tussle with two of them. I chased them for over a mile and then they dropped the net. I have her up at home now."

Our new tenant believing the net - known as a trammel net - to be "a dangerous engine, even in the hands of a keeper" bought the net for ten shillings. The keeper was reported to be "contented" with the sum although he had initially asked for a guinea.

"Most happy, sir. I will bring it up tonight" he said. Sometime later the previous occupant of Middleton House visited on a shoot day and spotted the net in the gun room.

"Hulloa! Why I see you have got the old net back again." Somewhat taken aback his host replied "Your old net indeed! That net was dropped a few weeks ago by poachers and picked up by -----'s keeper." According to the Fishing Gazette article, his companion burst into a fit of laughter and gasped out, "Well, that is a good one! I gave it to the fellow myself, just before I left the place."

The story concluded: "My friend thought ruefully of his lost shillings; but the joke was too rich, and he was reluctantly obliged to join in the laugh, even against himself."

Elsewhere the article explains that trammel nets were (and maybe are) a favourite tool of poachers. Keepers often buried hooks in the riverbed to snag them. This particular net is now nowhere to be found and probably rotted away.

The tale forms part of an extensive article by Major Turle describing in detail the river from Whitchurch through Longparish.

Henry Yelf

Pest Problems? Call the experts!

TEST VALLEY PEST CONTROL

RATS. MICE. SQUIRRELS. MOLES. RABBITS. BIRDS.

CLUSTER FLIES. FLEAS.

BED BUGS. ANTS. WASPS.

CLOTHES MOTHS, ETC...



Office: 01256 771632

Mobile: 07718986858

All aspects of pest control undertaken

Blackwell & Moody

A full range of memorials on display. Available in granite, marble, stone and slate. Existing memorials restored and cleaned. A personal individual service.

Magdalen Masonry Works,
Alresford Road,
Winchester, Hants
SO21 1HE

Tel: 01962 852 476

Dave Taylor Auto Repairs

Green Lane, Stoke
SP11 0PF

All work undertaken including

- Bodywork
- Paintwork
- Servicing
- MOT prep work
- Welding and repairs to MOT standard

All makes, models, light commercials

01264 736279

Home: 01264 323571

Mob: 07792 473174

Fine, Bespoke Kitchens



www.saxondesigns.co.uk : Tel 01264 773333
Studio at Weyhill Farm, Weyhill, SP118DE



RESTORATION SERVICE FURNITURE | ANTIQUES | OBJET D'ART

By experienced craftsman in Barton Stacey

- Repairs
- Polishing
- Upholstery
- Marquetry
- Floors
- Banisters
- Leather Tops
- Projects

Phone Tim Williams 07565 591481

Email: trwilliams71@gmail.com

HAVEN MEMORIALS

HAVEN MEMORIALS
are a family run business with over
30 years' experience of creating
bespoke headstones.

We pride ourselves on our
friendly service and impartial advice.
Contact us today to discuss
your requirements.

Haven Memorials, Unit/Shop 2, 6 Wote Street,
Basingstoke, RG21 7NW

Tel: 01256 811829

admin@havenstone.co.uk www.havenstone.co.uk

YorkAssociates

Architectural Design Services
Planning Consultants

- Full design services
- Planning applications for new houses and extensions
- Applications for Listed Building Consent
- Building Regulations submissions



Andrew Steeden MRICS
Chartered Building Surveyor

Telephone: 07393 025574

andy.yorkassociates@gmail.com

www.yorkassociates.org

Satellite & aerial



Satellite & Aerial:

- TV Aerial Installations and Repairs
- Sky Satellite Installations
- Freeview & FreeSat
- FM & DAB Radio Installations
- Extra TV, Satellite & Telephone points
- Commercial (IRS, CCTV)
- European & Motorised

Sound & Vision:

- Home Entertainment Systems
- Home Cinema
- Multi Room Audio Visual Installations
- LED, LCD, Plasma TV's & Projectors
- Home Automation Systems
- Lighting Control
- Commercial

For a friendly and professional service please call 01264 934 824,
email info@onedegreewest.tv or visit onedegreewest.tv



one degree west
satellite & aerial

KMSERVICES

Est. 1997



Painting & Decorating Specialists
Replacement Guttering, Cast Iron & Plastic
Gutter Cleaning & Maintenance

Tel: 01256 892122 Mobile: 0777 562 4488

Find us at www.kmservices.info

All work is tailor made to your specifications and carries a workmanship warranty



The Cricketers Inn

Hello Everyone! Thank you all for your continued support through our takeaways and café/deli on a Friday and Saturday. We will be continuing with this every weekend until we reopen on the 12th April.

We are busy getting your pub prepared for outside opening on the 12th April, making the garden nice and putting up covered areas. please email thecricketerslongparish@gmail.com, or call 01264 720424 to book a table, or you may also just turn up! Toilet facilities are allowed to be open, and we will be operating table service, and our takeaway hatch.

We cannot wait to welcome you back!

Matt and Team Cricketers
For more details and opening times visit:
www.cricketers.com



Update from The Plough Inn

Longparish Community Pub Ltd

Firstly, we are holding a meeting on 14th April at 7pm on Zoom and everyone is welcome. We would love you to join us to hear more about what is happening at The Plough Inn and what we are planning next and an opportunity to ask questions. To find out more, please go to ploughinn.org where you'll find details on how to join the meeting.

You will have probably seen that work is well underway – inside and out. Outside we have secured the bonfire area where teams of volunteers continue to clear the shrubs and borders. We are waiting for permission to remove some of the trees to give the garden additional light and space. The final landscape plan has now been drawn up.

Inside we have fire safety stations in place – just in case. Work is underway now to remodel the bar area – with more room for barstools and more space to stand at the bar – very important in a pub! The distinctive beautiful leaded windows of façade are going to have a make-over.

In the kitchen, volunteers have been busy stripping and scrubbing off the layers of grease from the ceiling, walls and floor ready for the new kitchen equipment to be installed. The ladies', gents' and wheelchair accessible washrooms have all been stripped out and will soon be ready for their new fittings and decoration.

Upstairs the manager's flat and guest rooms have been cleaned and are being prepped for decorating. The overall interior design plan is being drawn up and teams have been assembled to make curtains and gather local artworks. Very importantly, discussions about what to actually sell and serve at the bar are now well under way.

The Plough Inn belongs to Longparish and we would like to use all this wonderful space to benefit the community. As well as a pub and restaurant, the bar and dining area could be used for coffee mornings, village lunches, afternoon teas and for groups and societies who need somewhere to meet. There are plans for a new community/function room and outside room used perhaps as an art gallery, smaller meeting area or workspace. We would love to hear from you if you have an idea about how you might like to see all this potential community space used.

If you'd like to volunteer to help, please just drop us an email volunteer@lcpl.org.uk or call 720069.





INDEX to Advertisers

We are most grateful to our advertisers who have subscribed for another year from April 2021 to March 2022. It is thanks to them that we can deliver Hill & Valley free of charge to all households in the parishes.

Please support them whenever you can.
You will find your 'Index to Advertisers' as an insert inside this copy of Hill & Valley.

Hurstbourne Priors Village Hall: Mrs Helen Ford, ☎ 07789 691018, e: helenford62@hotmail.co.uk

Longparish Village Hall: Mrs Jacqui Healey, ☎ 07748 322533, e: villagehall@longparish.org.uk

Longparish Community Hall: During school open hours, Mrs Christine Leach ☎ 01264 720317

St Mary Bourne Village Centre: Miss Angela Cook, ☎ 01264 738158, e: smbvillagecentre@btinternet.com

The Village Halls remain closed for most bookings until further notice

Copy date for the May 2021 Hill & Valley edition: Wednesday 21st April 2021

Your contributions - letters, pictures, comments or articles are always welcome. Contact your parish editor by the copy date.

Printed by **The Andover Printing Company Ltd** ☎ 01264 334220 www.andoverprinting.co.uk © Hill & Valley Parish Magazine 2021

Parish Editors

Hurstb' Priors: Fenella Williams, Old Parsonage, H'b Pr, ☎ 01256 892081, e: fenella.williams@btopenworld.com

Longparish: Georgina Montague, Westbrook Cottage, ☎ 01264 720 493, e: hillandvalley@longparish.org.uk

St Mary Bourne & Woodcott: Pearl Pritchard, Downhams Cottage, Egbury, StMB, ☎ 07869 727 452, e: pearlpritchard@outlook.com

Editorial: Tom Bremridge, Longparish ☎ 01264 720 540
Michael Widén, St Mary Bourne ☎ 01264 738 250

Production/Distribution: Tom Bremridge, Bramblegate, Longparish, ☎ 01264 720 540, e: tbremridge@gmail.com
Michael Widén, Batsford Hs, StMB, ☎ 01264 738 250, e: m.widen@btinternet.com

Advertising: Michael Widén, Batsford House, StMB, ☎ 01264 738 250, e: m.widen@btinternet.com

Websites

* Hill & Valley pages on-line

Hurstbourne Priors:

Parish Council: www.hurstbournepriors-pc.org.uk *

Longparish:

Parish Council: www.longparish.org.uk *

St Mary Bourne:

Parish Council: www.stmarybourne-pc.gov.uk *

Village Centre: www.stmarybourne.co.uk

Community Hub: www.stmarybourne.org

The Bright Waters Benefice: www.brightwatersbenefice.com

Front cover photograph: *Ruth Widén*