

SMB COMMUNITY PLAY SPACE

FUNDRAISING & TIMELINES

PHASE 1 & 2

2024- 2025



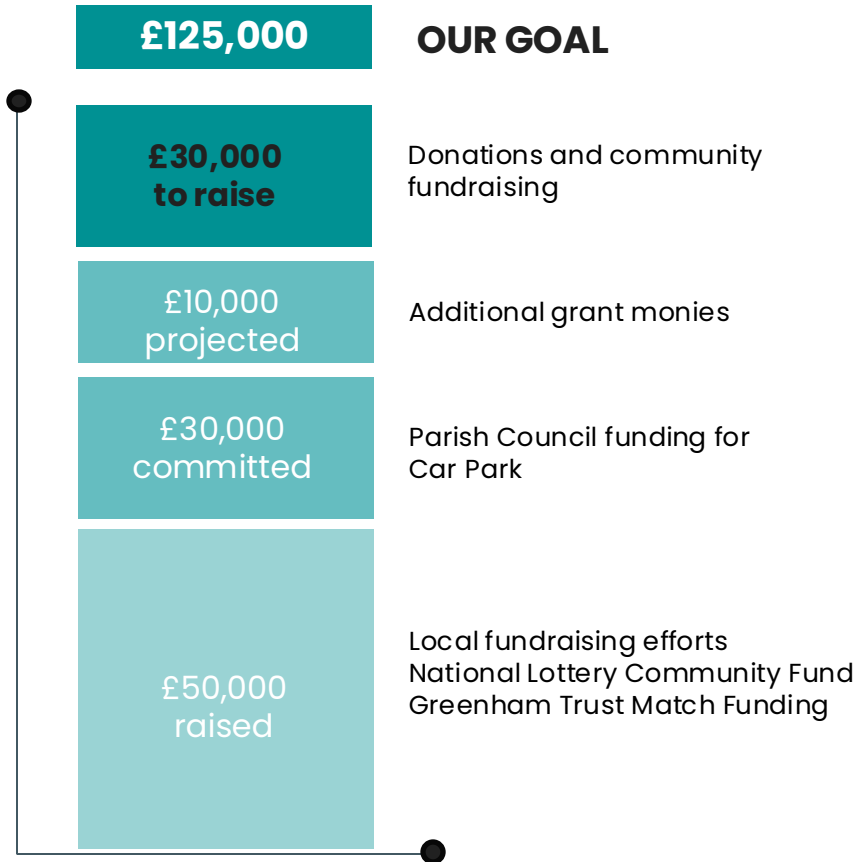
PHASE 1
PLAYGROUND PROJECT
SPRING 2025

PHASE 1 - TIMELINE



News in Hill & Valley – Dec/Jan, February and March issues

PHASE 1 - FUNDRAISING



WAYS TO DONATE

Help us raise the £30,000 needed to reach our goal. There are many ways to contribute!

Corporate Sponsorship

Personal Donations

We are open to support for specific pieces of equipment or in-kind donations to help with installation or landscaping.

All donations can be made through the **Good Exchange Platform** and are eligible for Gift Aid.

BEFORE – CURRENT FOOTPRINT W/EXISTING PARKING



AFTER – NEW LOCATION W/ADDITIONAL PARKING



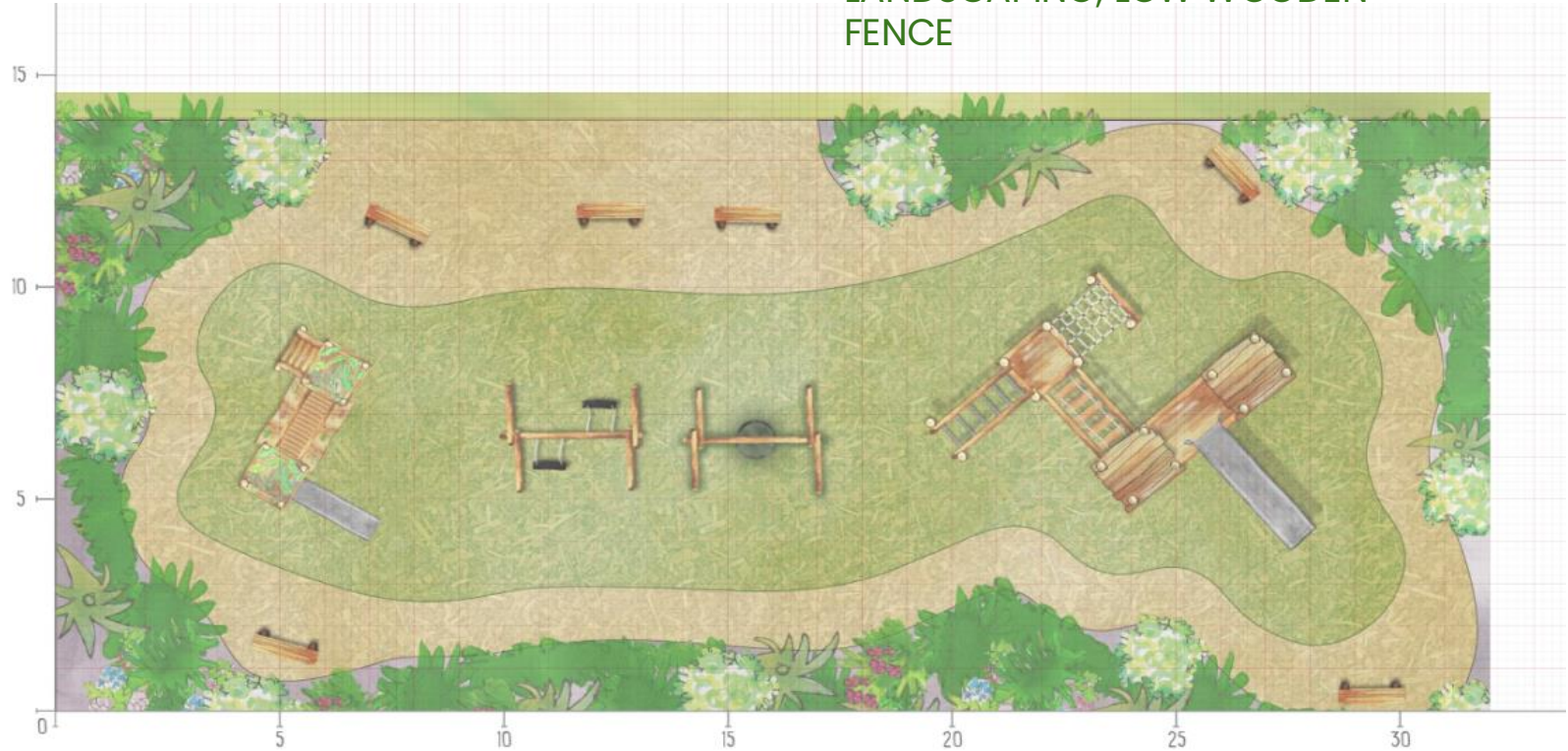
PLAY AREA TO GO BEHIND THE TRIM TRAIL



NEW PLAY AREA WILL GO BEHIND TRIM TRAIL PRESERVING THE CRICKET BOUNDARY AND MAKING BETTER USE OF MUGA SQ METRES

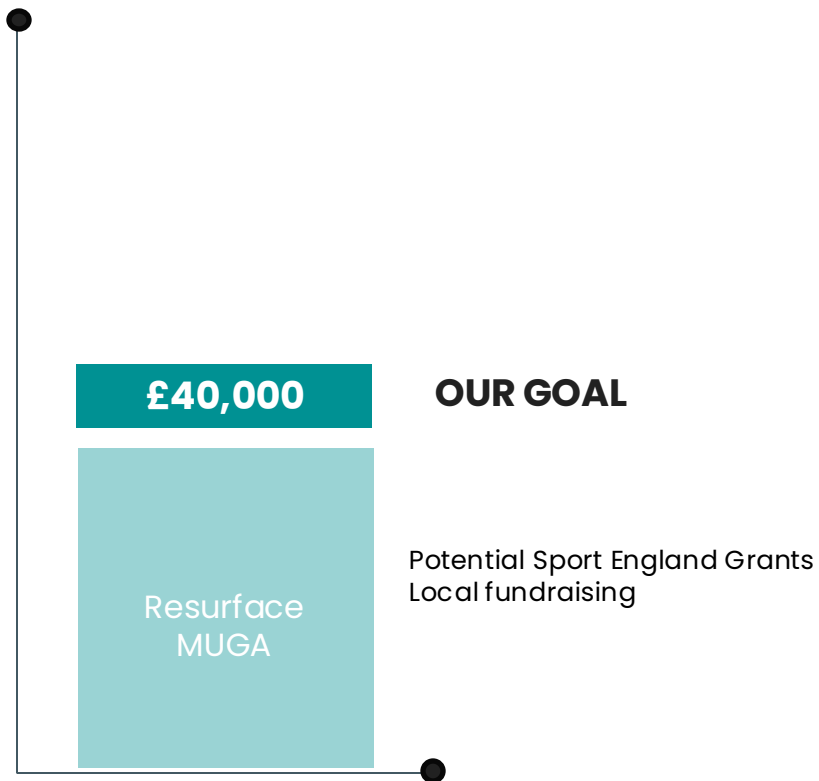
NEW PLAYGROUND

NATURAL WOODEN PLAY
EQUIPMENT, MULCH, BENCHES,
LANDSCAPING, LOW WOODEN
FENCE



PHASE 2
MUGA RESURFACING
SUMMER 2025

PHASE 2 – FUNDRAISING & TIMELINE



TIMELINE

Summer 2025

Revisit Phase 2 of the community play space project to resurface the Multi Use Games Area (MUGA) into a tennis court, with football goals and netball.

PHASE 2 – RESURFACE MUGA



THE EXISTING MUGA WILL BE REDUCED DOWN SIZE TO RETAIN TENNIS COURT FOOTPRINT AND RESURFACED



THE SHELTER WILL BE REMOVED TO CREATE ADDITIONAL PARKING SPACE

MUGA EXAMPLES



THANK YOU